

➤ **Responsive and Flexible Customer Service**

Reduce time to market and work together for continuous improvements with a true business partner

➤ **High-Mix Low-to-Medium Volume Focus**

World Class Manufacturing for small, medium, and large OEMs with low-to-medium volume projects

➤ **State-of-the-Art Manufacturing Capabilities**

PCBA to Box Build, 4 SMT Lines, BGA X-Ray, AOI, RoHS, 01005 Parts, Micro BGA, Testing, NPI

➤ **ISO 9001 Certified Quality System**

AS9100 Compliant, ISO 13485 Compliant, ITAR Compliant, IPC 610 and J-STD-001 Certified Staff

➤ **Diverse Industry Experience**

Aviation, Alternative Energy, Automotive, Communication, Industrial, Instrumentation, Medical, Military

Ascentron is Employee owned and features state-of-the-art equipment, an exceptional management team, a hard-working and dedicated workforce, and a focus on customer service. We utilize lean manufacturing practices, are ISO 9001 certified, compliant with AS9100, ISO 13485 and ITAR requirements.

Ascentron is certified as a Woman Owned Small Business (WOSB) which may have benefits for Government and/or Military related projects.

We support customers throughout the United States and have worked with some customers located as far away as Europe or Asia.

Business Overview

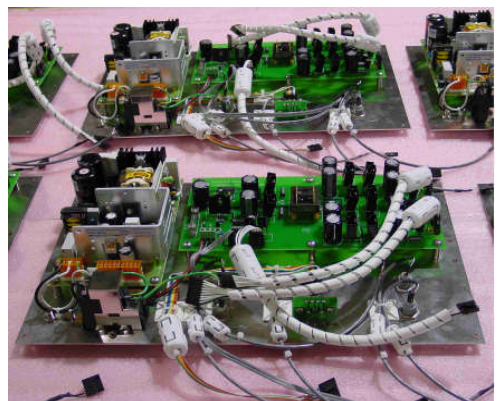
- Responsive Flexible Service For A Very Diverse Customer Base Of Business Partners
- Prototype To Medium Volume Production For Our Small to Large OEM Customers
- State-Of-The-Art Manufacturing Facility And Equipment With A Professional Management Staff And Outstanding Employee/Owners
- Exceptional Value! – Outstanding Service And Quality At A Competitive Price

Services Provided

- Turnkey And Consigned Service
- SMT & Through-Hole PCB Assembly
- RoHS Compliant Manufacturing
- “Box Build” - Complete Product Manufacturing
- Full Testing Services - MDA & Functional
- Prototype, Pre-Production, New Product Introduction (NPI) Service, & Design Assistance
- J-STD-001 Certified Operators and Trainers
- IPC-610 Certified QA Inspectors and Trainers

Industries Served:

- Aviation
- Alternative Energy
- Automotive
- Communications
- Industrial Products
- Instrumentation
- Medical
- Military



Surface Mount Technology

Four State-of-the-art SMT lines featuring:

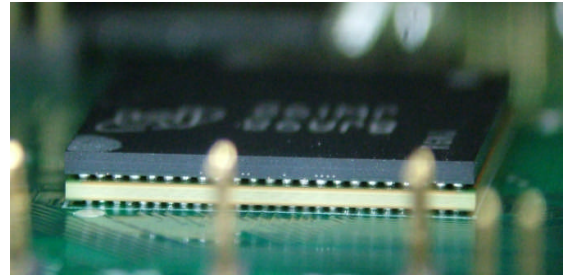
- Dek and Ekra Screen Printers
- All Philips Pick & Place Machines
- All Conceptronics 10 Zone Ovens
- VJ Electronix BGA X-Ray
- Programmable BGA/CSP Rework Station
- Mirtec MV-3 AOI Inspection Machines

Our equipment will place the smallest and largest BGA packages in use today and can place the extremely small 01005 package size components. We currently place 0201 components for several customers.

Our equipment features an advanced Feeder Exchange System (FES) which allow quick set-ups and job change over.

We maintain a large number of component feeders which allow the flexibility to have several jobs set up at a time.

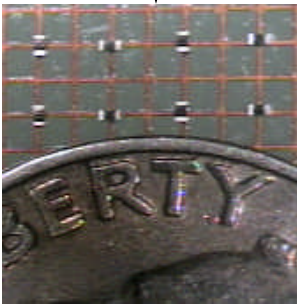
Part on Part (PoP) Example - BGA Mounted on a Micro BGA



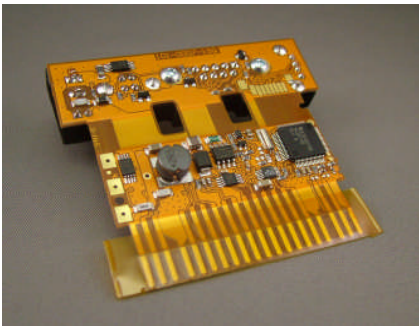
SMT Lines



0201 Package Size Parts Next To A Dime

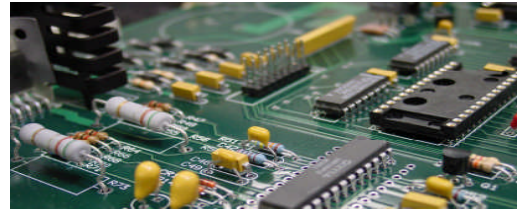


VJ Electronix BGA X-Ray



SMT And Through-Hole Parts Placed On A Flex Circuit

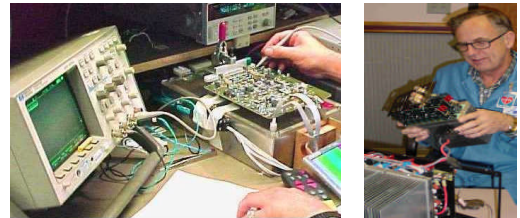
Through-Hole We maintain through-hole assembly capabilities and support both RoHS and leaded assemblies with separate dedicated areas and equipment.



Testing Services Complete testing services featuring Checksum MDA (bed-of-nails) testing and functional testing. We can help with test design and implement testing solutions with our experienced staff.



Engineering Support We can assist you with design for manufacturability (DFM) to help lower costs and increase manufacturing efficiencies, throughput and first pass yields. We assign a manufacturing engineer responsible for working directly with each customer.



Box Build We provide complete “Box Build” solutions and can drop-ship finished products to our customers end customer. We also offer sub-assembly and mechanical assembly and can provide Repair Depot services for PCBAs to Box Build Products. **We currently provide Box Build solutions for Aviation, Medical, Industrial, and Alternative Energy Customers.**



Quality Assurance Our Quality Management System is ISO 9001 Certified; and compliant with AS9100, ISO 13485, and ITAR requirements.

We utilize lean manufacturing processes and focus on continuous improvement building quality into the process. Our inspectors are Certified to IPC 610 and operators are Certified to J-STD-001. We utilize in-process inspection as well as final inspection using state-of-the-art inspection tools such as X-Ray and the latest AOI Equipment with 3D imaging. Our goal is to meet or exceed our customer requirements.



Prototype And New Product Introduction

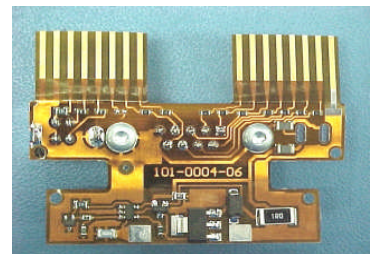
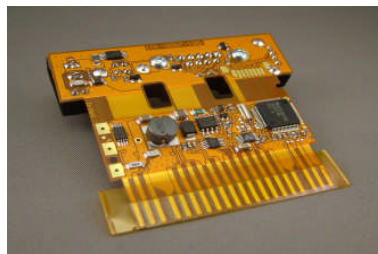
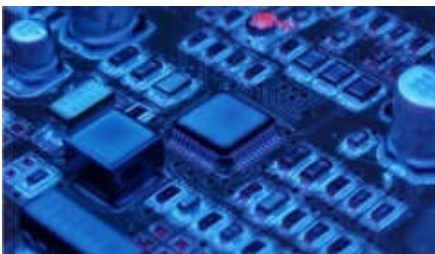
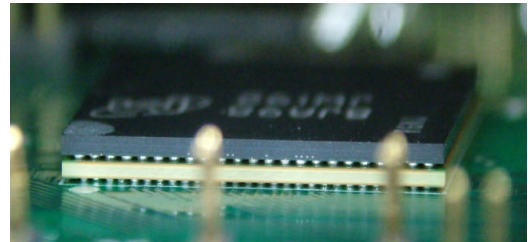
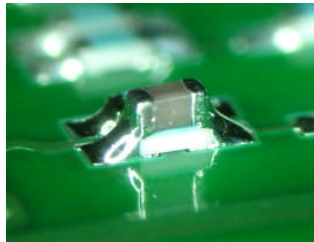
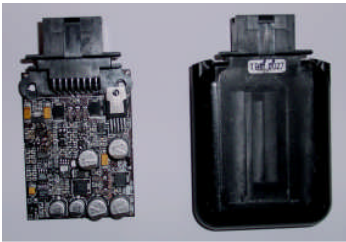
- Fast And Flexible Response – 1 To 5 days
- Use Of Production Level Equipment And Processes
- NPI Service From Initial Product Design To Production Runs

Standard Production Lead-times

- 3 To 5 Days For Quick Turn Production
- 10 To 12 Days For SMT, Thru-Hole PCAs, And Simple “Box Builds”
- 12 To 15 Days For Complex “Box Builds”
- *We Do Perform “Miracles” As Needed*

Special Processes

Potting; Conformal Coating; Components Mounted On Flex Circuits; Stacked Components Down To 0402; BGA Part Mounted On BGA Part (POP); In-House Machine Shop; In-House Tooling And Fixtures; & Others



We Succeed By Helping Our Customers Succeed

Responsive And Flexible Service
Prototype To Medium Volume Production For OEM Customers.
State-Of-The-Art Manufacturing With Professional Management Team
Build And Maintain Business Partnerships With Our Customers

Let Us Help You Succeed, Call 541-826-2405 Today

Ascentron is located in Southern Oregon between San Francisco and Portland on the I-5 Corridor. Our 33,000 square foot facility is located just outside of Medford, Oregon. We are near the Medford Airport which has flights daily to the following: Seattle; Portland; San Francisco; Los Angeles; Las Vegas, Phoenix; Salt Lake City, and Denver.

Come visit our factory and see why this is a great place to do business.



Let Us Help You Succeed, Call 541-826-2405 Today



**994 Antelope Road
White City, Oregon 97503
Tel 541-826-2405
Fax 541-826-1205**

www.ascentron.com