

Assembly Name Rollerskate Rocket Booster CIM		
Assembly (BOM) Number 001-0010-090	Product Revision C	Quality Standard ANSI/IPC-A-610 Latest Rev.
Customer Acme	Agency/Cust. Restrictions RoHS	

Assembly Classification Commercial		
E. I. C. Wyle E. Coyote		
Document Status Uncontrolled	Edition B	Last Modified 2/15/2010

Process Point: 0 Controlling Documentation 1	Prints from Online Documentation are only valid for 5 days from this date: <input type="text"/>



Review Signatures

Author:	<i>AL B. BACH</i>	<i>01APR2009</i>
Engineering:	<i>Wyle E. Coyote</i>	<i>April 01, 2009</i>
Quality:	<i>I. C. Everything</i>	<i>04/01/09</i>
PCA:	<i>Reddikyll O'Watt</i>	<i>04/01/09</i>
Mechanical:	<i>STAN D. ARDS</i>	<i>APR. 01 2009</i>

Customer's Product Instructions & Configuration

<i>Document Type</i>	<i>Document Title</i>	<i>Revision</i>
Assembly Drawing	RRB Assembly	C
Bill of Materials	Rocket Booster BOM	C
Schematic	RRB Schematic	C
Test Procedure	"RRB-CIM Accelerated Linear Motion Measurement with Precipice"	1.0

Assembly Change History

<i>Date</i>	<i>Description of Change</i>	<i>Suggested By</i>	<i>ECO</i>	<i>Book Ed.</i>	<i>EIC</i>
29FEB2009	Initial Release		N/A	A	WC
01APR2009	Implement ECO	Customer	9-852	B	WC

Some notes about this document:

This is intended to show how a typical assembly process is documented. It is pretty basic, but we have the ability to document any process.

We insert digital pictures in to the assembly instructions to help clarify a process. There are no pictures included with these sample assembly instructions because this is a fictitious product (It is rather difficult to take pictures of something that does not exist).

This is a fictitious product. Any similarity to an actual product is unintended and coincidental.



PROPRIETARY INFORMATION: Property of Ascentron, Inc.
Unlawful to copy, reproduce or disclose by any means without the express written consent of Ascentron.

Assembly Name Rollerskate Rocket Booster CIM		
Assembly (BOM) Number 001-0010-090	Product Revision C	Quality Standard ANSI/IPC-A-610 Latest Rev.
Customer Acme	Agency/Cust. Restrictions RoHS	



Assembly Classification Commercial		
E. I. C. Wyle E. Coyote		
Document Status Uncontrolled	Edition B	Last Modified 2/15/2010

Process Point: 0 Controlling Documentation 2
Prints from Online Documentation are only valid for 5 days from this date: <input type="text"/>



Assembly Instruction Standards

1. All assemblies will be built to IPC Class 2 quality standards or better, unless otherwise indicated in the instructions or in the Quality Inspection Notes. Refer to the latest revision of ANSI/IPC-A-610.
2. Any standards that are set by the customer override any IPC standards.
3. Any component with an "M\$" in the description is a moisture sensitive device. Be sure to handle in compliance with current Moisture Sensitive Device Handling procedures.
4. The images of the assembly and the processes are for illustration purposes only. The colors in the images may not match the objects they depict. Some colors or areas may even be exaggerated to point out a specific feature.
5. The shapes of some components in some diagrams may be exaggerated to show a shape or process more clearly.
6. The "Pin One" markings in the inspection and installation Process Points are Red or White and refer to:
 - a. Pin One for DIPs, SIPs, and other ICs.
 - b. Pin One for connectors.
 - c. The "Banded" side or negative (-) side for diodes.
 - d. The negative (-) lead for Aluminum Electrolytic Capacitors.
 - e. The positive (+) lead for Tantalum and Ceramic Capacitors.
 - f. The negative (-) lead for LEDs.
7. Anything that is marked "To Be Determined", "TBD", or "unknown" needs to have an Engineer set the process. Generally, this will happen only on the first couple of runs of a product, or when new equipment is set into place on the production floor.
8. Some process points will indicate an operation must be performed by someone with a minimum of a certain skill set. In those cases, the person must be certified to the indicated skill set or to a higher skill set.
9. Some designators do not exist on the PCB. The document creator uses them as phantom designators to allow part number which do not have designators to be assigned to process points and the BOM block. Examples of components which may use phantom part numbers are, but not limited to, sil pads, insulators, labels, RTV, heat sink grease, and conformal coat.
10. Assemblies which have Key Characteristics will have a description of the characteristics and any associated tooling listed in a numbered table which will appear on process page "Controlling Documents 3". Process points which contain the instructions on assembling features with Key Characteristics will have the Key Characteristics noted with a symbol and reference to the corresponding table number.

Table of Process Points

1 CAGE:Feeder Cage
2 SMT1:SMT Side One
3 SMT1:Reflow
4 Wash:DI Cleaning (SMT Side 1)
5 SMT1:SMT Side Two
6 SMT1:Reflow
7 SMT Inspection Top
8 SMT Inspection Bottom
9 PRPC:Component Prep
10 PSLD:Pre-Slideline Asy
11 PRP:Masking
12 SLDE:Slideline
13 Populated Slideline
14 Not Populated Slideline
15 WAVE:Wave
16 Wash:DI Cleaning
17 ASYS:Solder Assembly
18 TST:Test
19 PKG/SHIP:Package Product & Ship
20 Not Populated Top & Bottom
0 Controlling Documentation 3
0 Controlling Documentation 2
0 Controlling Documentation 1
0 Bill of Materials



PROPRIETARY INFORMATION: Property of Ascentron, Inc. Unlawful to copy, reproduce or disclose by any means without the express written consent of Ascentron.

Assembly Name Rollerskate Rocket Booster CIM		
Assembly (BOM) Number 001-0010-090	Product Revision C	Quality Standard ANSI/IPC-A-610 Latest Rev.
Customer Acme	Agency/Cust. Restrictions RoHS	

Assembly Classification Commercial		
E. I. C. Wyle E. Coyote		
Document Status Uncontrolled	Edition B	Last Modified 2/15/2010

Process Point: 0 Controlling Documentation 3
Prints from Online Documentation are only valid for 5 days from this date: <input type="text"/>



Quality Inspection Notes

Quality Instructions

1. All assemblies will be built to IPC Class 2 quality standards or better, unless otherwise indicated in the instructions or in the Quality Notes. Refer to the latest revision of ANSI/IPC-A-610.

2. Any standards that are set by the customer override any IPC standards.

Table of Key Characteristics

No.	<i>Key Characteristic Description</i>	<i>Required Tools</i>

1 Symbol used to note a Key Characteristic and it's associated number in the reference table.



PROPRIETARY INFORMATION: Property of Ascentron, Inc. Unlawful to copy, reproduce or disclose by any means without the express written consent of Ascentron.

Assembly Name Rollerskate Rocket Booster CIM		
Assembly (BOM) Number 001-0010-090	Product Revision C	Quality Standard ANSI/IPC-A-610 Latest Rev.
Customer Acme	Agency/Cust. Restrictions RoHS	

Assembly Classification Commercial		
E. I. C. Wyle E. Coyote		
Document Status Uncontrolled	Edition B	Last Modified 2/15/2010

Process Point: 0 Bill of Materials
Prints from Online Documentation are only valid for 5 days from this date: <input type="text"/>



Bill of Materials

0 Bill of Materials					
Part Number	Description	Quantity	Box # / Routing	Reference	Alternate P/N
001-609-0003-R	DIODE SM 1.5SMC36AT3 SMC	4	CAGE SMT1	D6, D15, D18-D19	
001-609-0018-R	DIODE SM BAV99 SOT23	3	CAGE SMT1	D12, D16-D17	
001-609-0037-R	DIODE SM S3A 50V SMC	2	CAGE SMT1	D13-D14	
001-609-0059-R	DIO SM MURS32OT3 SMC	1	CAGE SMT1	D1	
001-611-0013-R	DIO TH 1N4007 AXIAL	2	PRPC SLDE	D2-D3	
001-611-0017-R	DIO TH 1N4933 AXIAL	2	PRPC SLDE	D10-D11	
001-615-0000-R	RES SM 0 OHM 5% 1210	20	CAGE SMT1	R26-R28, R37-R38, R43, R45-R46, R49-R50, R54, R58, R61, R81, R83, R85, R90-R91, R97-R98	
001-615-0999-R	RES SM 10.0K 1% 0805	7	CAGE SMT1	R3, R10, R15, R17, R19, R62, R68	
001-615-1000-R	RES SM 100 OHM 1% 0805	3	CAGE SMT1	R1, R8-R9	
001-615-3990-R	RES SM 499 OHM 1% 1206	6	CAGE SMT1	R56, R60, R63-R64, R79, R92	
001-615-3992-R	RES SM 49.9K 1% 0805	5	CAGE SMT1	R6, R31-R33, R55	
001-615-5232-R	RES SM 52.3K 1% 1206	10	CAGE SMT1	R2, R18, R22-R25, R40-R41, R51, R53	
001-619-0103-R	RES TH 10K OHM 5% 1/4W	2	PRPC SLDE	R42, R47	
001-619-0121-R	RES TH 120 OHM 5% 1/4W	2	PRPC SLDE	R67, R88	
001-619-0156-R	RES TH 15M OHM 5% 1/4W	7	PRPC SLDE	R72-R78	
001-619-0160-R	RES TH 16 OHM 5% 1/4W	2	PRPC SLDE	R70-R71	
001-619-0222-R	RES TH 2.2K OHM 5% 1/4W	2	PRPC SLDE	R34, R65	
001-619-5103-R	RES TH 510K 5% 1/4W	2	PRPC SLDE	R21, R66	
001-625-0025-R	XSR TH TIP29A TO220	2	PRPC ASYS	U57-U58	
001-627-0025-R	VR TH 78L62 6.2V TO92	2	PRPC SLDE	D5, D8	
001-627-0035-R	VR TH LT1117CST-5 SOT223	1	PRPC SLDE	U52	
001-630-0003-R	IC TH MAX1241 DIP8	2	PRPC SLDE	U20, U50	
001-630-0023-R	IC TH 74HCT08 DIP14	1	PRPC SLDE	U54	
001-630-0027-R	IC TH MC33091A DIP8	2	PRPC SLDE	U9, U11	
001-630-0089-R	IC TH 27C256 DIP28	1	PRPC SLDE	U16	
001-630-0109-R	IC TH 6264 DIP28	1	PRPC SLDE	U21	
001-630-0227-R	IC TH TDA1517U SIP9	2	PRPC SLDE	RP1-RP2	
001-630-0252-R	IC TH 74HC390 DIP12	2	PRPC SLDE	U14-U15	
001-630-0255-R	IC TH 74HC161 DIP12	1	PRPC SLDE	U22	
001-639-0153-R	CAP TH CER .1UF 100V 10%	2	PRPC ASYS	C79-C80	
001-639-0178-R	CAP TH CER 100PF 100V	5	PRPC SLDE	C39-C40, C43-C44, C52	
001-639-0213-R	CAP TH CER 10PF 50V	7	PRPC SLDE	C3, C15-C17, C24, C55, C73	
001-639-0220-R	CAP TH CER 22PF 100V 10%	10	PRPC SLDE	C2, C5, C29-C34, C48, C56	
001-639-0235-R	CAP TH TA 1UF 50V	15	PRPC SLDE	C8, C35, C37, C41-C42, C45, C57-C59, C71, C77-C78, C87-C88, C90	
001-641-0001-R	IC SM 75107 SOIC14	3	CAGE SMT1	U34-U36	
001-641-0029-R	IC SM 74ACT00 SOIC14	1	CAGE SMT1	U41	
001-641-0032-R	IC SM 370C250 PLCC68	1	CAGE SMT1	U5	
001-641-0033-R	IC SM MAX964 SOIC16	2	CAGE SMT1	U12, U19	



PROPRIETARY INFORMATION: Property of Ascentron, Inc.
 Unlawful to copy, reproduce or disclose by any means without the
 express written consent of Ascentron.

Assembly Name Rollerskate Rocket Booster CIM		
Assembly (BOM) Number 001-0010-090	Product Revision C	Quality Standard ANSI/IPC-A-610 Latest Rev.
Customer Acme	Agency/Cust. Restrictions RoHS	

Assembly Classification Commercial		
E. I. C. Wyle E. Coyote		
Document Status Uncontrolled	Edition B	Last Modified 2/15/2010

Process Point: 0 Bill of Materials
Prints from Online Documentation are only valid for 5 days from this date: <input type="text"/>




Bill of Materials

0 Bill of Materials					
Part Number	Description	Quantity	Box # / Routing	Reference	Alternate P/N
001-641-0057-R	IC SM 74HC123 SOIC16	1	CAGE SMT1	U23	
001-641-0065-R	IC SM 74HC374 SOIC20	4	CAGE SMT1	U27-U30	
001-641-0103-R	IC SM 74HC273 SOIC20	4	CAGE SMT1	U42, U46-U48	
001-641-0136-R	IC SM DS1267S-100 SOW8	3	CAGE SMT1	U31-U33	
001-641-0151-R	IC SM MAX232ACWE SOW8	2	CAGE SMT1	U26, U39	
001-641-0153-R	IC SM UC3906DW SOW16	1	CAGE SMT1	U24	
001-641-0223-R	IC SM SSM2404S SOIC20	5	CAGE SMT1	U1-U3, U10, U13	
001-641-0323-R	IC SM 82C684 PLCC68	2	CAGE SMT1	U7-U8	
001-641-0332-R	IC SM TMS34010 PLCC68	1	CAGE SMT1	U6	
001-641-0371-R	IC SM 74HCT157D SOIC18	3	CAGE SMT1	U40, U45, U49	
001-641-0372-R	IC SM 74HCT390D SOIC18	2	CAGE SMT1	U55-U56	
001-652-0023-R	CAP TH EL 2.2UF 35V	5	PRPC SLDE	C6, C9, C19, C38, C91	
001-657-0001-R	CAP SM .047UF 50V 10%1206	5	CAGE SMT1	C60-C64	
001-657-0005-R	CAP SM 22PF 50V COG 0805	8	CAGE SMT1	C1, C10-C14, C86, C89	
001-657-0008-R	CAP SM .1UF 1206 50V 10%	4	CAGE SMT1	C68-C69, C76, C82	
001-657-0010-R	CAP SM .01UF 50V NPO 0805	3	CAGE SMT1	C4, C7, C72	
001-657-0022-R	CAP SM 220PF 50V 20% 0805	3	CAGE SMT1	C23, C84-C85	
001-657-0059-R	CAP SMD 10PF 50V 10% 1206	4	CAGE SMT1	C65-C66, C94-C95	
001-657-0076-R	CAP SM .1UF 25V 10% 0805	3	CAGE SMT1	C18, C21-C22	
001-657-0085-R	CAP SMD 100PF 50V 5% 1206	3	CAGE SMT1	C67, C70, C83	
001-657-0106-R	CAP SMTA 10UF 25V D	3	CAGE SMT1	C49-C50, C53	
001-667-0007-R	XTL TH 32.768 KHZ	1	PRPC ASYS	Y1	
001-668-0773-R	CON TH HDR 2X8 VERT	1	SLDE	J1	
001-668-0821-R	CON TH HDR 2X32 VERT	1	SLDE	J3	
001-738-0010-R	PCB ROLLERSKATE BOOSTER	1	CAGE SMT1	---	
735-0186	LBL 1.00 X .375 THERMAL	1	TEST	---	



PROPRIETARY INFORMATION: Property of Ascentron, Inc.
Unlawful to copy, reproduce or disclose by any means without the
express written consent of Ascentron.

Assembly Name Rollerskate Rocket Booster CIM		
Assembly (BOM) Number 001-0010-090	Product Revision C	Quality Standard ANSI/IPC-A-610 Latest Rev.
Customer Acme	Agency/Cust. Restrictions RoHS 	

Assembly Classification Commercial		
E. I. C. Wyle E. Coyote		
Document Status Uncontrolled	Edition B	Last Modified 2/15/2010

Process Point: 1 CAGE:Feeder Cage
Prints from Online Documentation are only valid for 5 days from this date: <input type="text"/>



Load the parts and reel feeders per placement diagrams from SMT.

Assembly Name Rollerskate Rocket Booster CIM		
Assembly (BOM) Number 001-0010-090	Product Revision C	Quality Standard ANSI/IPC-A-610 Latest Rev.
Customer Acme	Agency/Cust. Restrictions RoHS	

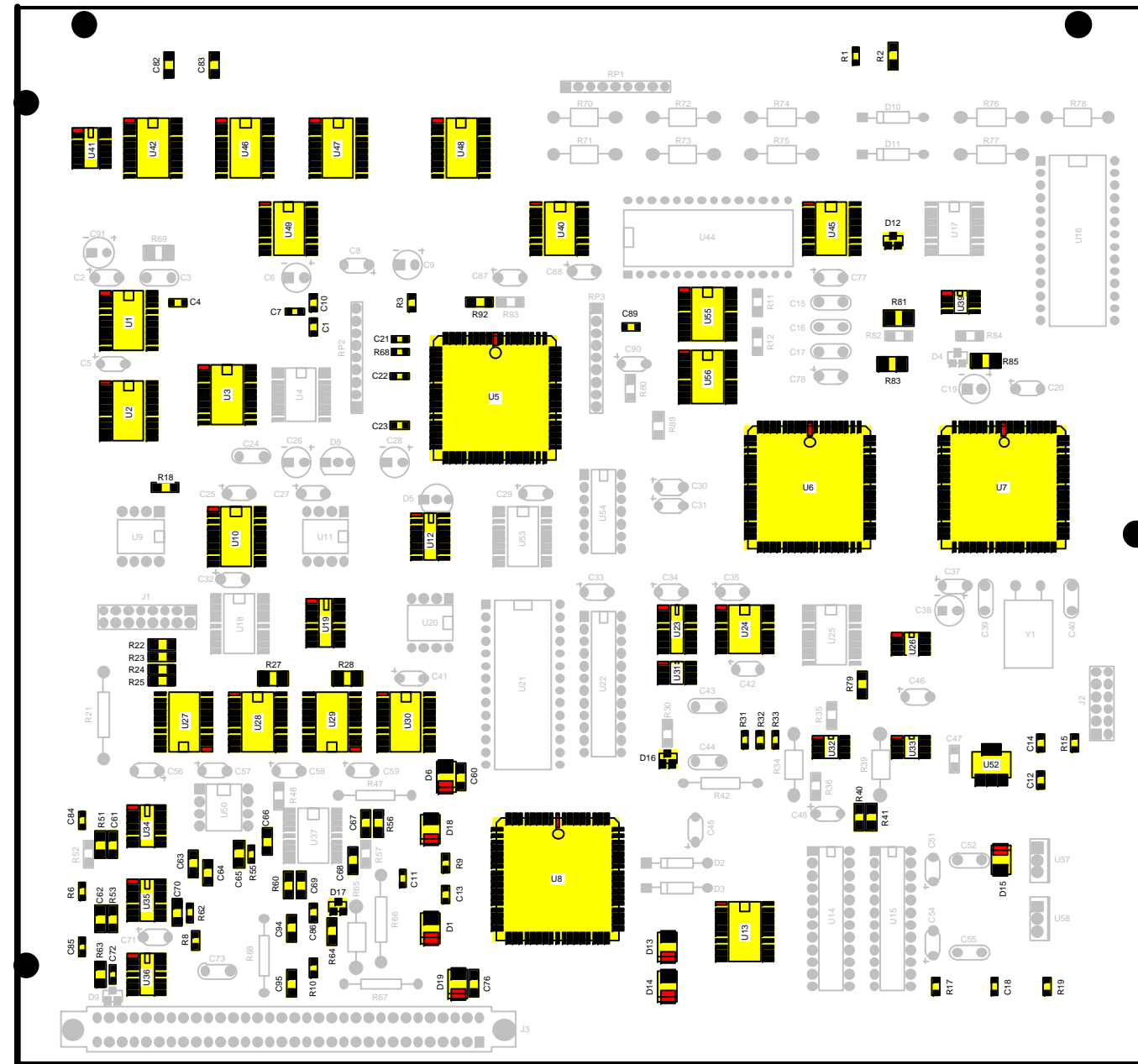
Assembly Classification Commercial		
E. I. C. Wyle E. Coyote		
Document Status Uncontrolled	Edition B	Last Modified 2/15/2010

Process Point: 2 SMT1:SMT Side One
Prints from Online Documentation are only valid for 5 days from this date: <input type="text"/>



Conveyer Flow and Block Diagram.

Solder Paste	
Preferred	P/N 799-0954
Acceptable	P/N 799-0957
Epoxy	N/A
Stencil P/N	790-0090
Program Name	
Block	R_ACM0090_02_BLC_1
Expanded	R_ACM0090_02_EXP_1
Reflow Profile	LF-2
Notes	



Conveyer flows in this direction.

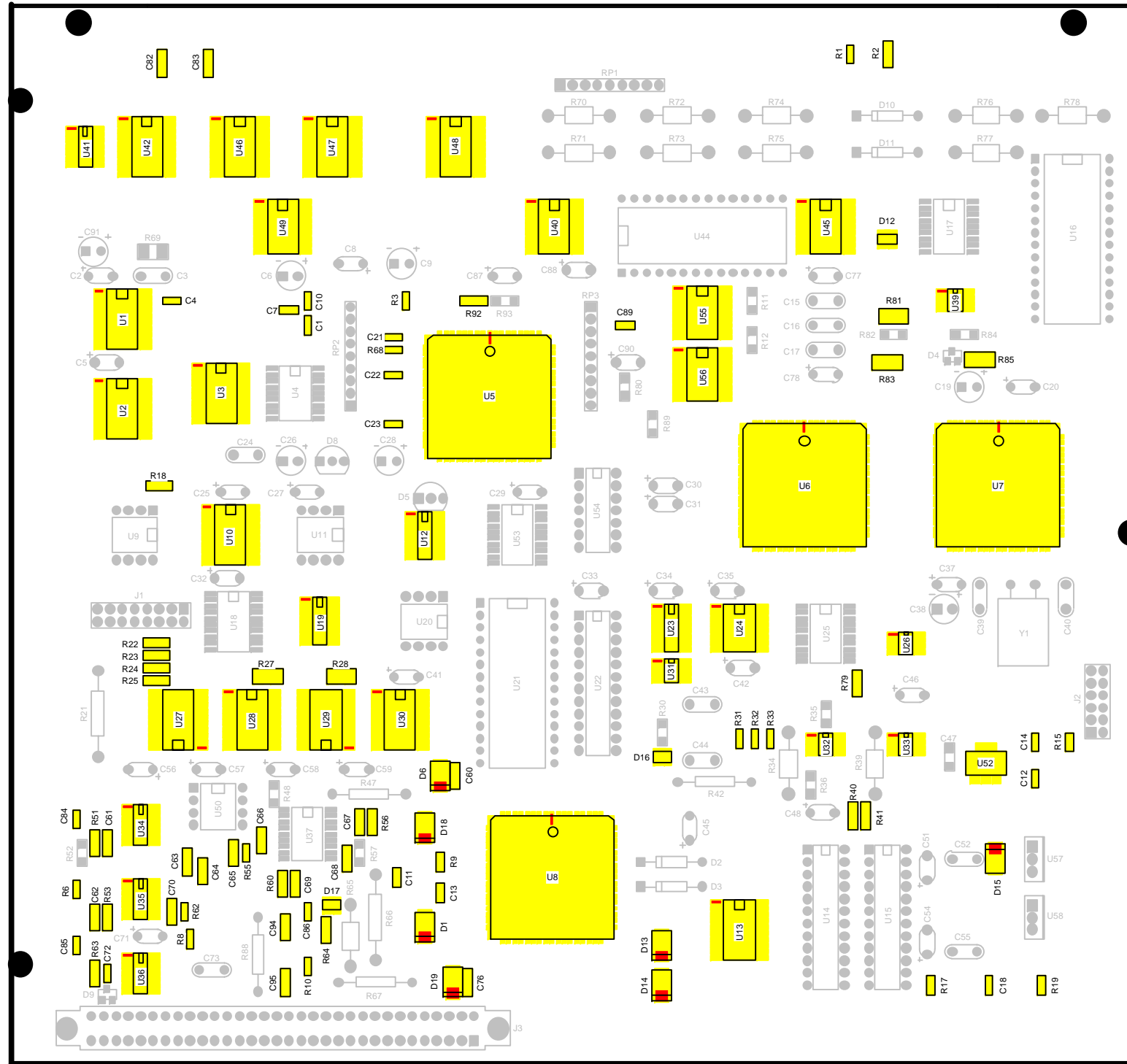
Call Q.A. for First Article

Assembly Name Rollerskate Rocket Booster CIM		
Assembly (BOM) Number 001-0010-090	Product Revision C	Quality Standard ANSI/IPC-A-610 Latest Rev.
Customer Acme	Agency/Cust. Restrictions RoHS	

Assembly Classification Commercial		
E. I. C. Wyle E. Coyote		
Document Status Uncontrolled	Edition B	Last Modified 2/15/2010

Process Point 3 SMT1:Reflow
Prints from Online Documentation are only valid for 5 days from this date: <input type="text"/>


All of the Reflow Instructions are on the SMT Model Point.



Call Q.A. for First Article



PROPRIETARY INFORMATION: Property of Ascentron, Inc.
Unlawful to copy, reproduce or disclose by any means without the
express written consent of Ascentron.

Assembly Name Rollerskate Rocket Booster CIM		
Assembly (BOM) Number 001-0010-090	Product Revision C	Quality Standard ANSI/IPC-A-610 Latest Rev.
Customer Acme	Agency/Cust. Restrictions RoHS 	

Assembly Classification Commercial		
E. I. C. Wyle E. Coyote		
Document Status Uncontrolled	Edition B	Last Modified 2/15/2010

Process Point: 4 Wash:DI Cleaning (SMT Side 1)
Prints from Online Documentation are only valid for 5 days from this date: <input type="text"/>



Wash the assembly using the most appropriate inline cleaner.

Assembly Name Rollerskate Rocket Booster CIM		
Assembly (BOM) Number 001-0010-090	Product Revision C	Quality Standard ANSI/IPC-A-610 Latest Rev.
Customer Acme	Agency/Cust. Restrictions RoHS	

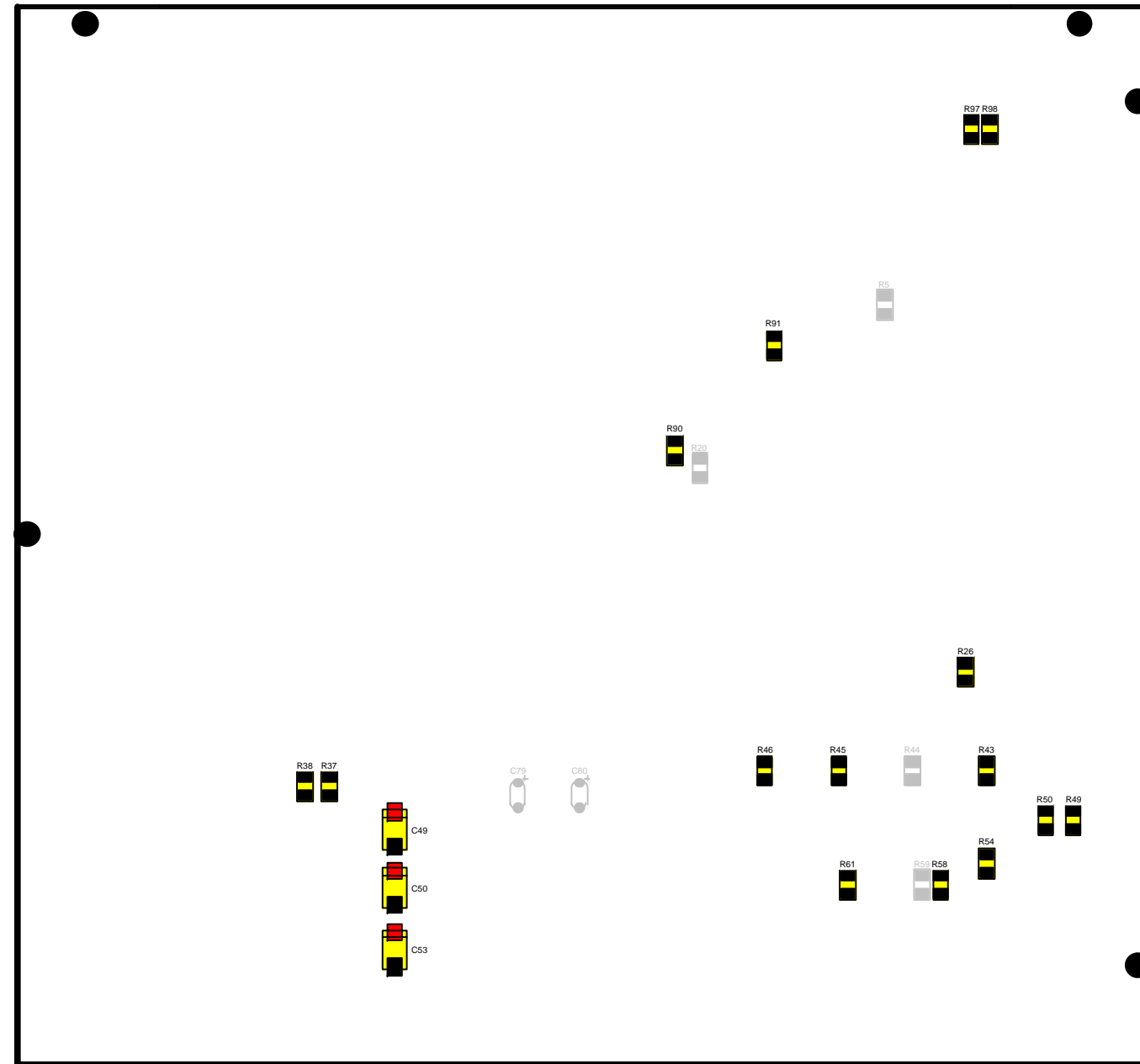
Assembly Classification Commercial		
E. I. C. Wyle E. Coyote		
Document Status Uncontrolled	Edition B	Last Modified 2/15/2010

Process Point: 5 SMT1:SMT Side Two
Prints from Online Documentation are only valid for 5 days from this date: <input type="text"/>

Conveyer Flow and Block Diagram.

Solder Paste	
Preferred	N/A
Acceptable	N/A
Epoxy	P/N 799-0937
Stencil P/N	790-0091
Program Name	
Block	R_ACM0090_02_BLC_2
Expanded	R_ACM0090_02_EXP_2
Reflow Profile	EPOXY 1
Notes	

Be sure to use epoxy instead of Solder Paste.



Conveyer flows in this direction.

Call Q.A. for First Article

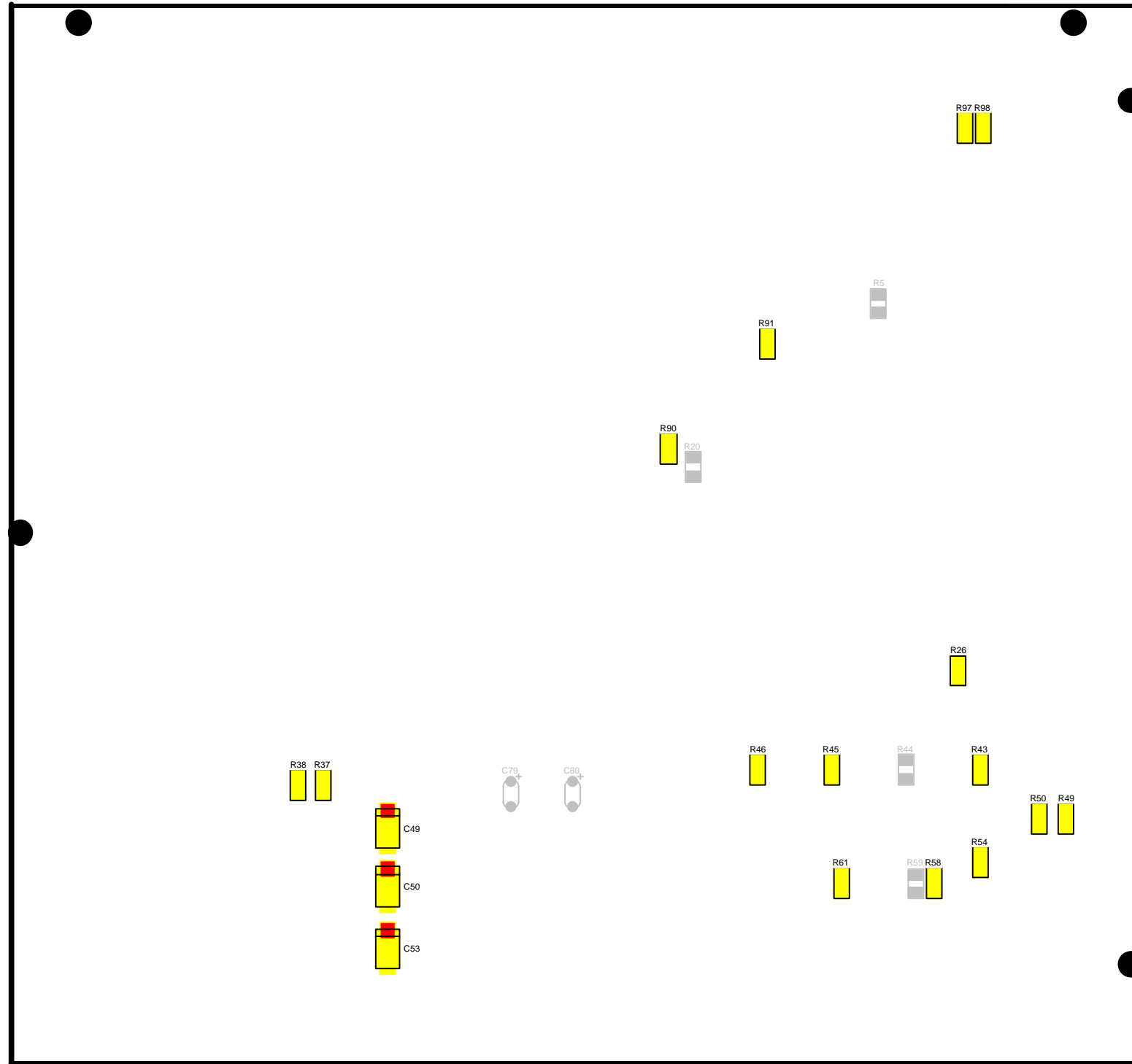
Assembly Name Rollerskate Rocket Booster CIM		
Assembly (BOM) Number 001-0010-090	Product Revision C	Quality Standard ANSI/IPC-A-610 Latest Rev.
Customer Acme		Agency/Cust. Restrictions RoHS

Assembly Classification Commercial		
E. I. C. Wyle E. Coyote		
Document Status Uncontrolled	Edition B	Last Modified 2/15/2010

Process Point 6 SMT1:Reflow
Prints from Online Documentation are only valid for 5 days from this date: <input type="text"/>



All of the Reflow Instructions are on the SMT Model Point.



Call Q.A. for First Article

Assembly Name Rollerskate Rocket Booster CIM		
Assembly (BOM) Number 001-0010-090	Product Revision C	Quality Standard ANSI/IPC-A-610 Latest Rev.
Customer Acme	Agency/Cust. Restrictions RoHS	

Assembly Classification Commercial		
E. I. C. Wyle E. Coyote		
Document Status Uncontrolled	Edition B	Last Modified 2/15/2010

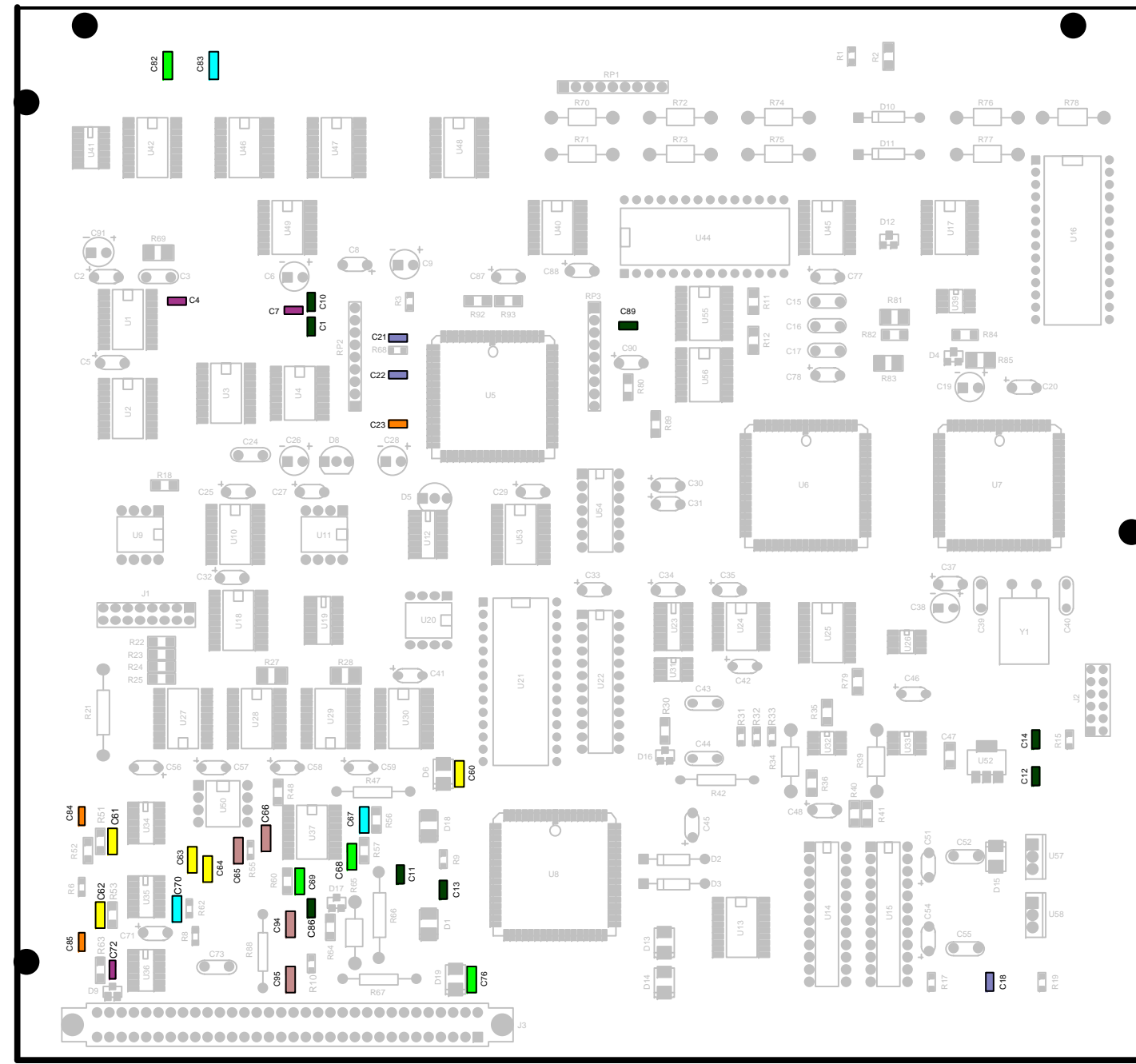
Process Point: 7 SMT Inspection Top
Prints from Online Documentation are only valid for 5 days from this date: <input type="text"/>



7 SMT Inspection Top

Inspect per Color Coding

Key	Part Number	Reference	Description	Qty
	001-657-0008-R	C68-C69, C76, C82	CAP SM .1UF 1206 50V 10%	4
	001-657-0085-R	C67, C70, C83	CAP SMD 100PF 50V 5% 1206	3
	001-657-0059-R	C65-C66, C94-C95	CAP SMD 10PF 50V 10% 1206	4
	001-657-0001-R	C60-C64	CAP SM .047UF 50V 10%1206	5
	001-657-0010-R	C4, C7, C72	CAP SM .01UF 50V NPO 0805	3
	001-657-0076-R	C18, C21-C22	CAP SM .1UF 25V 10% 0805	3
	001-657-0005-R	C1, C10-C14, C86, C89	CAP SM 22PF 50V COG 0805	8
	001-657-0022-R	C23, C84-C85	CAP SM 220PF 50V 20% 0805	3



Assembly Name Rollerskate Rocket Booster CIM		
Assembly (BOM) Number 001-0010-090	Product Revision C	Quality Standard ANSI/IPC-A-610 Latest Rev.
Customer Acme	Agency/Cust. Restrictions RoHS	

Assembly Classification Commercial		
E. I. C. Wyle E. Coyote		
Document Status Uncontrolled	Edition B	Last Modified 2/15/2010

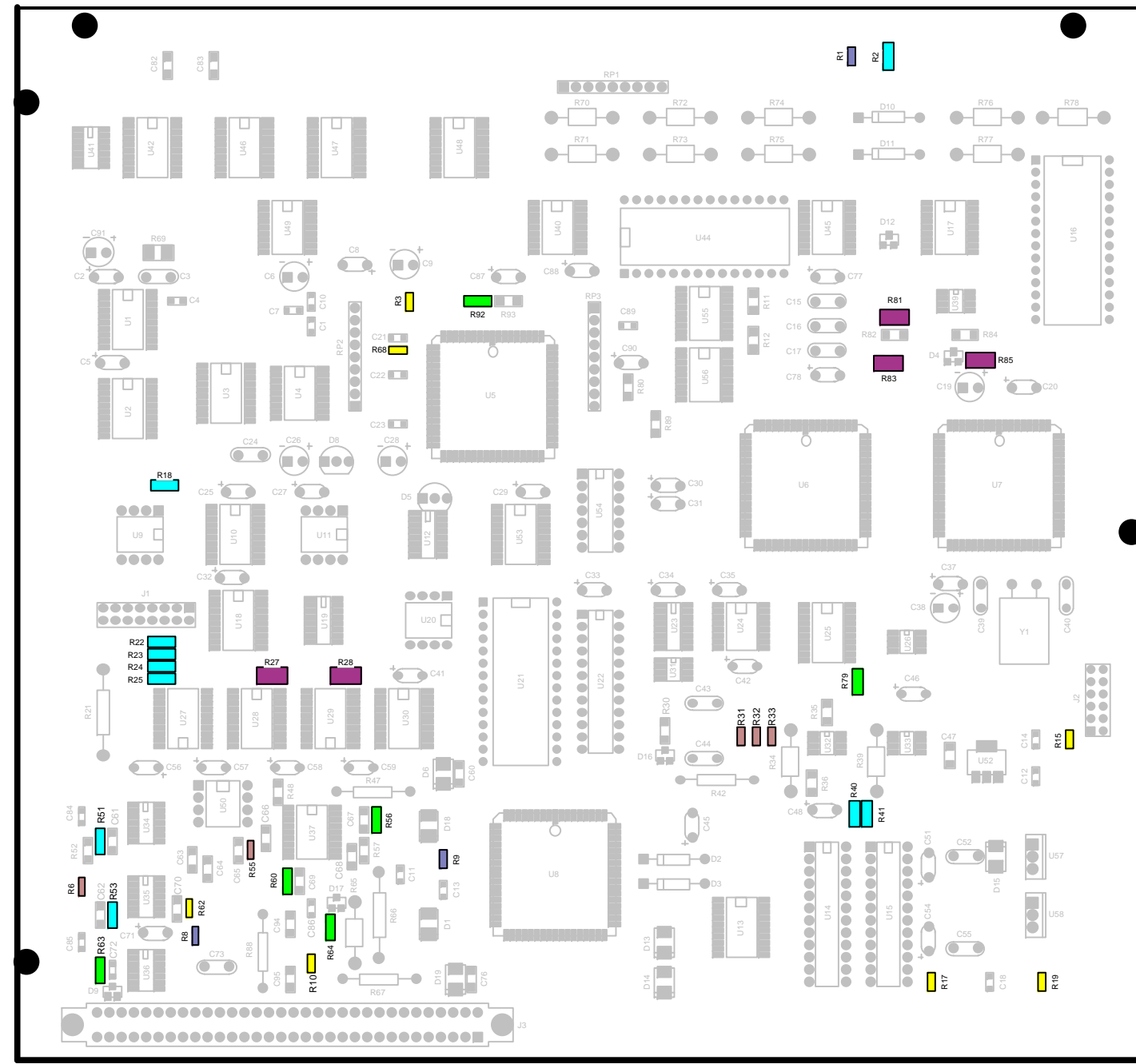
Process Point: 7 SMT Inspection Top
Prints from Online Documentation are only valid for 5 days from this date: <input type="text"/>



7 SMT Inspection Top

Inspect per Color Coding

Key	Part Number	Reference	Description	Qty
	001-615-3990-R	R56, R60, R63-R64, R79, R92	RES SM 499 OHM 1% 1206	6
	001-615-5232-R	R2, R18, R22-R25, R40-R41, R51, R53	RES SM 52.3K 1% 1206	10
	001-615-3992-R	R6, R31-R33, R55	RES SM 49.9K 1% 0805	5
	001-615-0999-R	R3, R10, R15, R17, R19, R62, R68	RES SM 10.0K 1% 0805	7
	001-615-0000-R	R27-R28, R81, R83, R85	RES SM 0 OHM 5% 1210	5
	001-615-1000-R	R1, R8-R9	RES SM 100 OHM 1% 0805	3



Assembly Name Rollerskate Rocket Booster CIM		
Assembly (BOM) Number 001-0010-090	Product Revision C	Quality Standard ANSI/IPC-A-610 Latest Rev.
Customer Acme	Agency/Cust. Restrictions RoHS	

Assembly Classification Commercial		
E. I. C. Wyle E. Coyote		
Document Status Uncontrolled	Edition B	Last Modified 2/15/2010

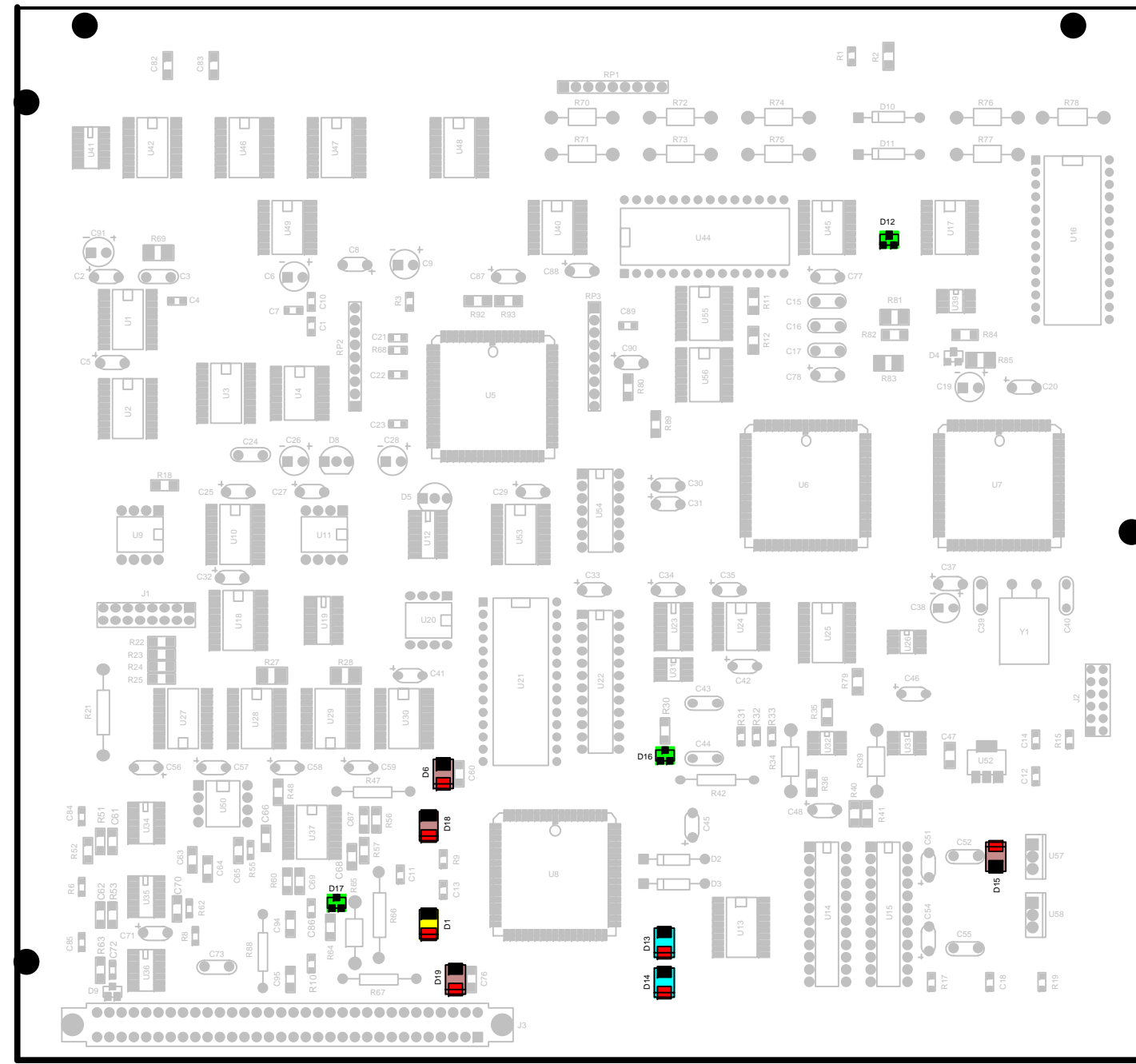
Process Point 7 SMT Inspection Top
Prints from Online Documentation are only valid for 5 days from this date: <input type="text"/>



7 SMT Inspection Top

Inspect per Color Coding

Key	Part Number	Reference	Description	Qty
	001-609-0018-R	D12, D16-D17	DIODE SM BAV99 SOT23	3
	001-609-0037-R	D13-D14	DIODE SM S3A 50V SMC	2
	001-609-0003-R	D6, D15, D18-D19	DIODE SM 1.5SMC36AT3 SMC	4
	001-609-0059-R	D1	DIO SM MURS32OT3 SMC	1





PROPRIETARY INFORMATION: Property of Ascentron, Inc.
 Unlawful to copy, reproduce or disclose by any means without the
 express written consent of Ascentron.

Assembly Name Rollerskate Rocket Booster CIM		
Assembly (BOM) Number 001-0010-090	Product Revision C	Quality Standard ANSI/IPC-A-610 Latest Rev.
Customer Acme	Agency/Cust. Restrictions RoHS	

Assembly Classification Commercial		
E. I. C. Wyle E. Coyote		
Document Status Uncontrolled	Edition B	Last Modified 2/15/2010

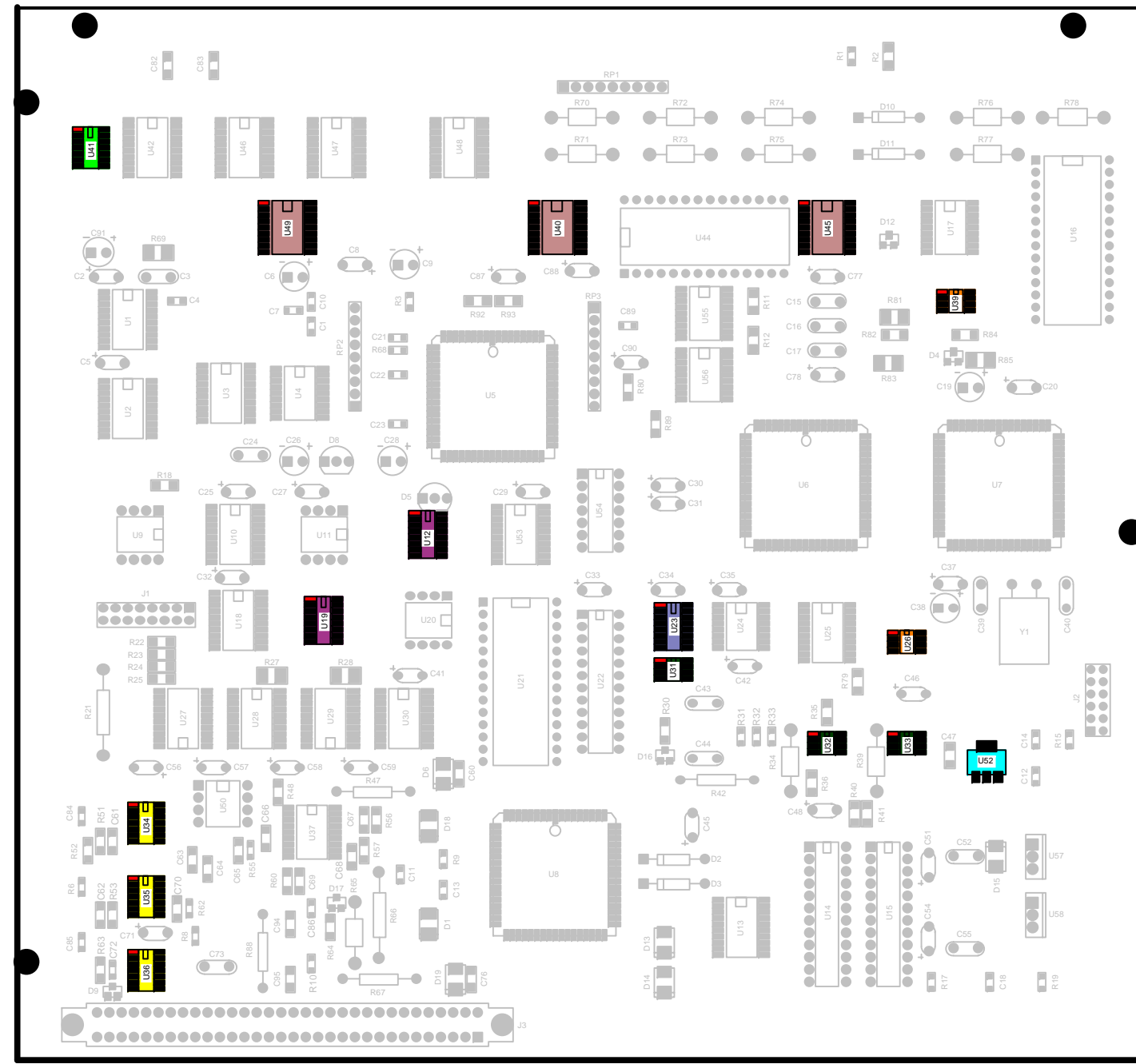
Process Point: 7 SMT Inspection Top
Prints from Online Documentation are only valid for 5 days from this date: <input type="text"/>



7 SMT Inspection Top

Inspect per Color Coding

Key	Part Number	Reference	Description	Qty
	001-641-0029-R	U41	IC SM 74ACT00 SOIC14	1
	001-627-0035-R	U52	VR TH LT1117CST-5 SOT223	1
	001-641-0371-R	U40, U45, U49	IC SM 74HCT157D SOIC18	3
	001-641-0001-R	U34-U36	IC SM 75107 SOIC14	3
	001-641-0033-R	U12, U19	IC SM MAX964 SOIC16	2
	001-641-0057-R	U23	IC SM 74HC123 SOIC16	1
	001-641-0136-R	U31-U33	IC SM DS1267S-100 SOW8	3
	001-641-0151-R	U26, U39	IC SM MAX232ACWE SOW8	2





PROPRIETARY INFORMATION: Property of Ascentron, Inc.
 Unlawful to copy, reproduce or disclose by any means without the
 express written consent of Ascentron.

Assembly Name Rollerskate Rocket Booster CIM		
Assembly (BOM) Number 001-0010-090	Product Revision C	Quality Standard ANSI/IPC-A-610 Latest Rev.
Customer Acme	Agency/Cust. Restrictions RoHS	

Assembly Classification Commercial		
E. I. C. Wyle E. Coyote		
Document Status Uncontrolled	Edition B	Last Modified 2/15/2010

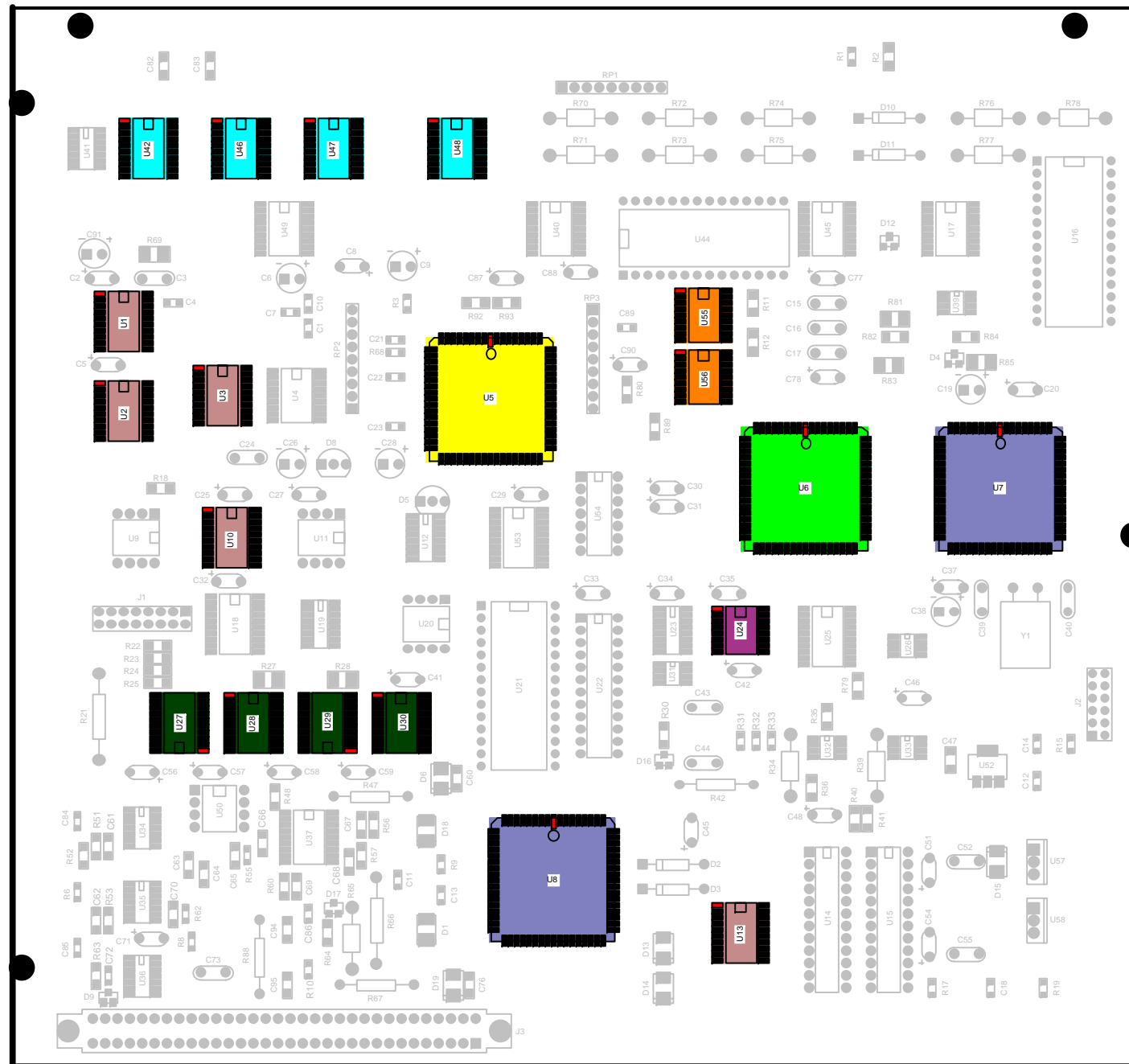
Process Point 7 SMT Inspection Top
Prints from Online Documentation are only valid for 5 days from this date: <input type="text"/>



7 SMT Inspection Top

Inspect per Color Coding

Key	Part Number	Reference	Description	Qty
	001-641-0332-R	U6	IC SM TMS34010 PLCC68	1
	001-641-0103-R	U42, U46-U48	IC SM 74HC273 SOIC20	4
	001-641-0223-R	U1-U3, U10, U13	IC SM SSM2404S SOIC20	5
	001-641-0032-R	U5	IC SM 370C250 PLCC68	1
	001-641-0153-R	U24	IC SM UC3906DW SOW16	1
	001-641-0323-R	U7-U8	IC SM 82C684 PLCC68	2
	001-641-0065-R	U27-U30	IC SM 74HC374 SOIC20	4
	001-641-0372-R	U55-U56	IC SM 74HCT390D SOIC18	2





PROPRIETARY INFORMATION: Property of Ascentron, Inc. Unlawful to copy, reproduce or disclose by any means without the express written consent of Ascentron.

Assembly Name Rollerskate Rocket Booster CIM		
Assembly (BOM) Number 001-0010-090	Product Revision C	Quality Standard ANSI/IPC-A-610 Latest Rev.
Customer Acme	Agency/Cust. Restrictions RoHS	

Assembly Classification Commercial		
E. I. C. Wyle E. Coyote		
Document Status Uncontrolled	Edition B	Last Modified 2/15/2010

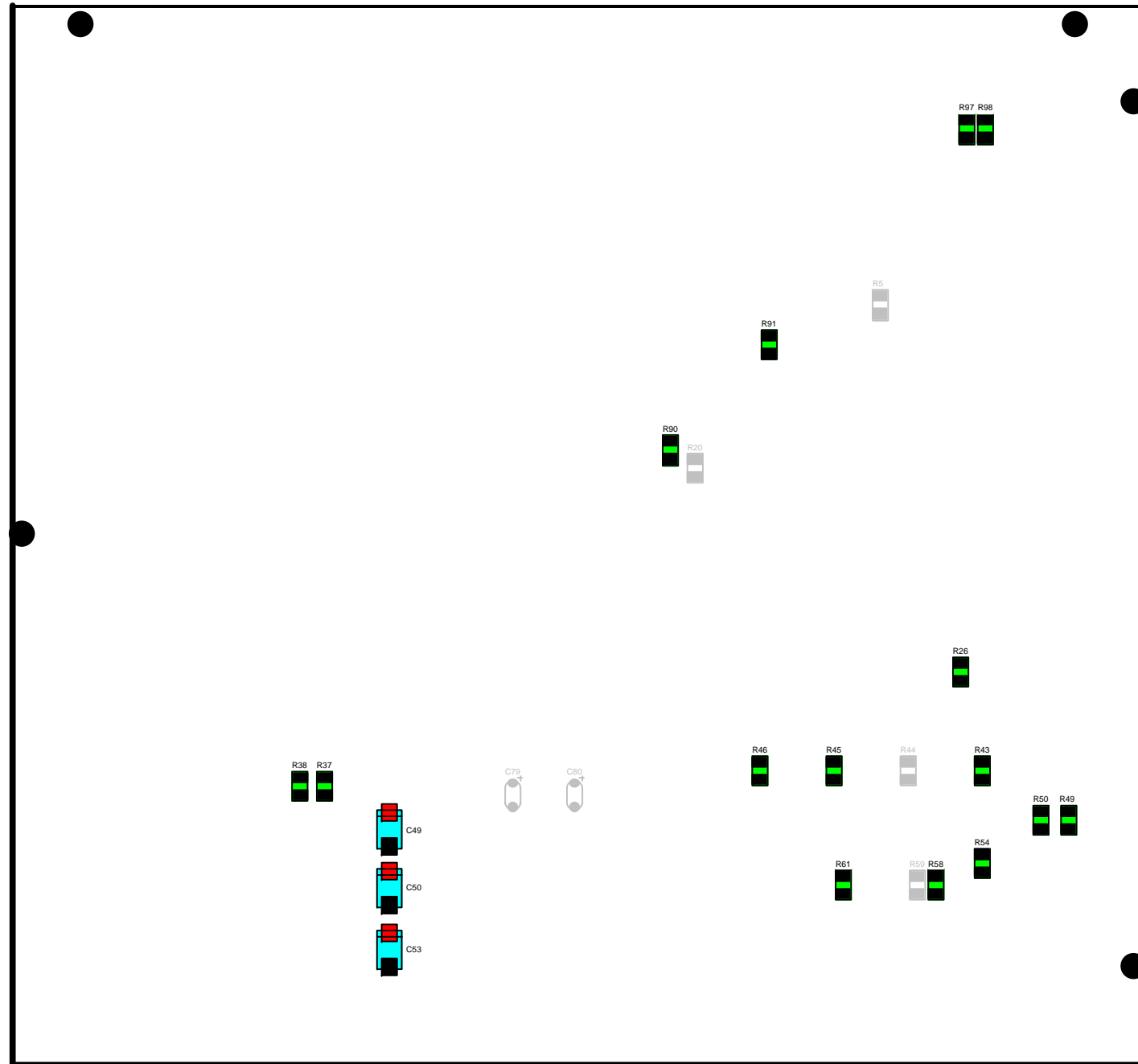
Process Point: 8 SMT Inspection Bottom
Prints from Online Documentation are only valid for 5 days from this date: <input type="text"/>



8 SMT Inspection Bottom

Inspect per Color Coding

Key	Part Number	Reference	Description	Qty
	001-615-0000-R	R26, R37-R38, R43, R45-R46, R49-R50, R54, R58, R61, R90-R91, R97-R98	RES SM 0 OHM 5% 1210	15
	001-657-0106-R	C49-C50, C53	CAP SM TA 10UF 25V D	3



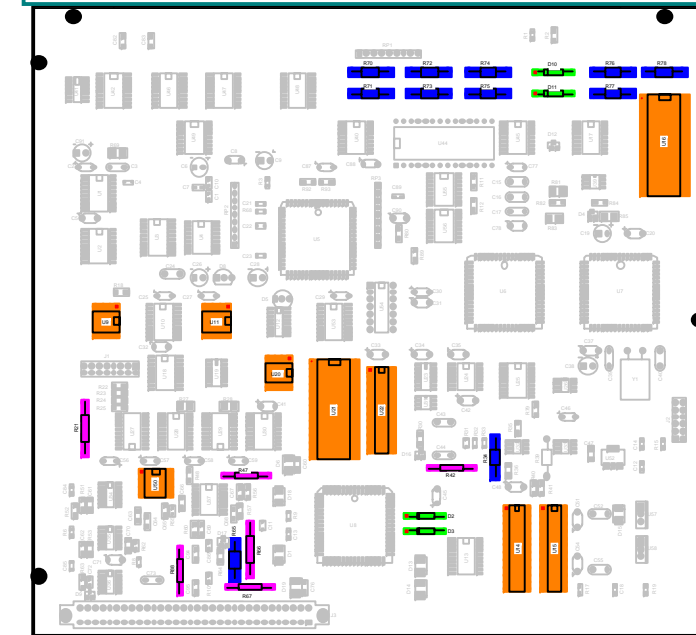
Assembly Name Rollerskate Rocket Booster CIM		
Assembly (BOM) Number 001-0010-090	Product Revision C	Quality Standard ANSI/IPC-A-610 Latest Rev.
Customer Acme	Agency/Cust. Restrictions RoHS	

Assembly Classification Commercial		
E. I. C. Wyle E. Coyote		
Document Status Uncontrolled	Edition B	Last Modified 2/15/2010

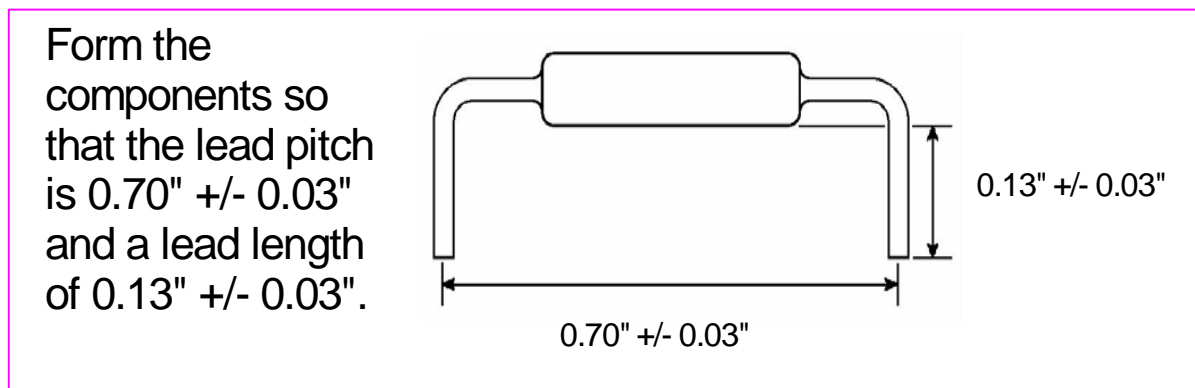
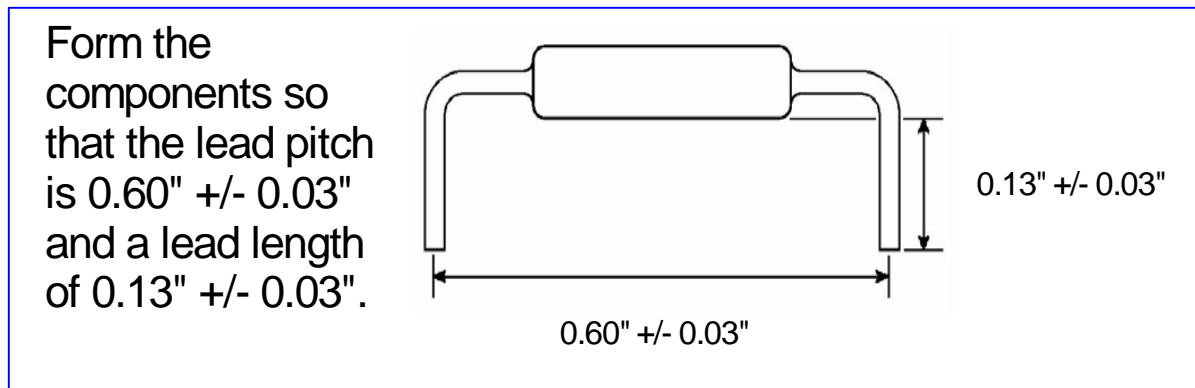
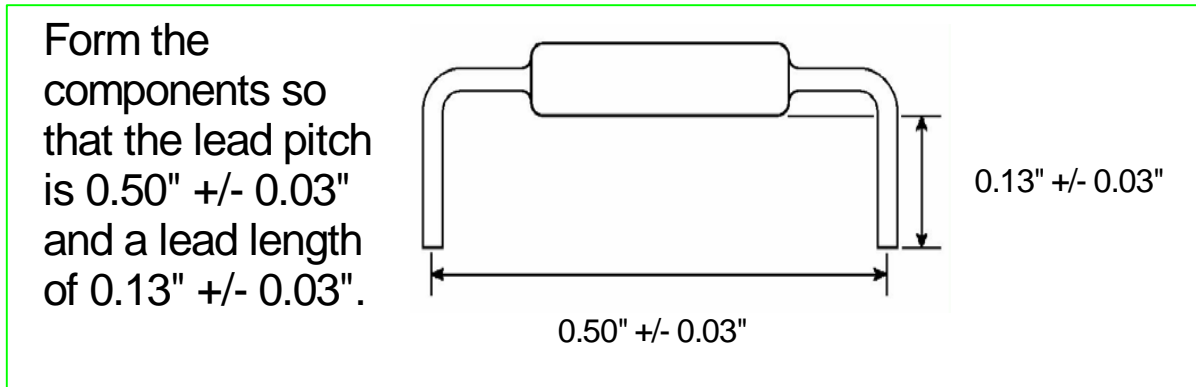
Process Point 9 PRPC:Component Prep
Prints from Online Documentation are only valid for 5 days from this date: <input type="text"/>

9 PRPC:Component Prep				
Prep per Color Coding				
Key	Box #	Part Number	Description	Qty
	PRPC SLDE	001-611-0013-R	DIO TH 1N4007 AXIAL	2
	PRPC SLDE	001-611-0017-R	DIO TH 1N4933 AXIAL	2
	PRPC SLDE	001-619-0156-R	RES TH 15M OHM 5% 1/4W	7
	PRPC SLDE	001-619-0160-R	RES TH 16 OHM 5% 1/4W	2
	PRPC SLDE	001-619-0222-R	RES TH 2.2K OHM 5% 1/4W	2
	PRPC SLDE	001-619-0121-R	RES TH 120 OHM 5% 1/4W	2
	PRPC SLDE	001-619-0103-R	RES TH 10K OHM 5% 1/4W	2
	PRPC SLDE	001-619-5103-R	RES TH 510K 5% 1/4W	2
	PRPC SLDE	001-630-0003-R	IC TH MAX1241 DIP8	2
	PRPC SLDE	001-630-0027-R	IC TH MC33091A DIP8	2
	PRPC SLDE	001-630-0089-R	IC TH 27C256 DIP28	1
	PRPC SLDE	001-630-0109-R	IC TH 6264 DIP28	1
	PRPC SLDE	001-630-0252-R	IC TH 74HC390 DIP12	2
	PRPC SLDE	001-630-0255-R	IC TH 74HC161 DIP12	1

All lead lengths are measured from the bottom of the component, meniscus or standoff bend.



Form the leads of the ICs so that they easily fit into the PCB or Socket.



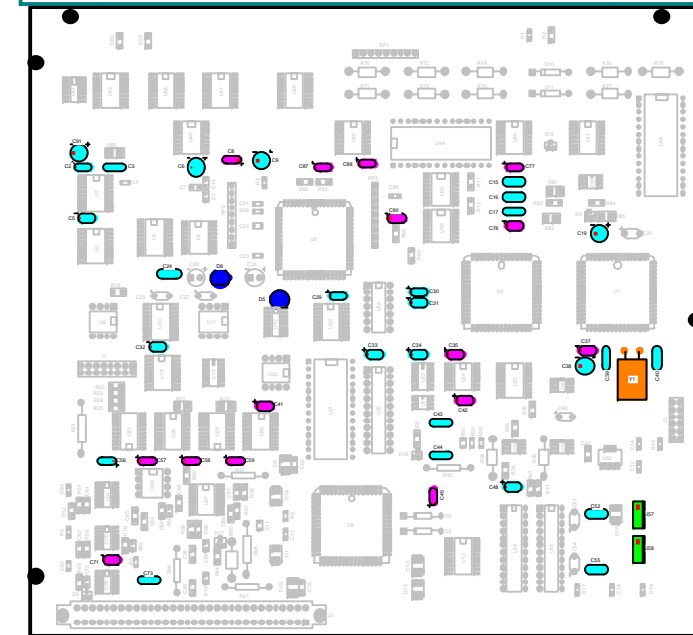
Assembly Name Rollerskate Rocket Booster CIM		
Assembly (BOM) Number 001-0010-090	Product Revision C	Quality Standard ANSI/IPC-A-610 Latest Rev.
Customer Acme	Agency/Cust. Restrictions RoHS	

Assembly Classification Commercial		
E. I. C. Wyle E. Coyote		
Document Status Uncontrolled	Edition B	Last Modified 2/15/2010

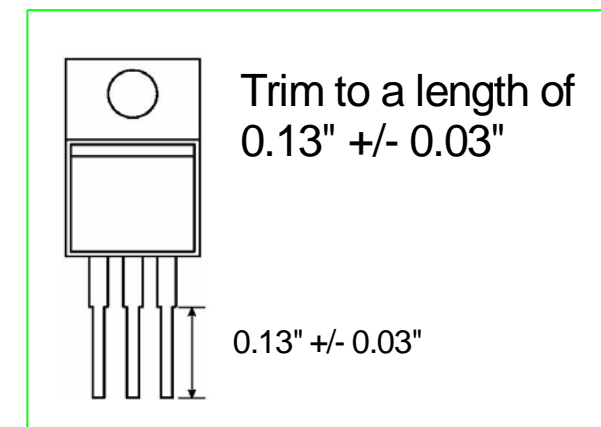
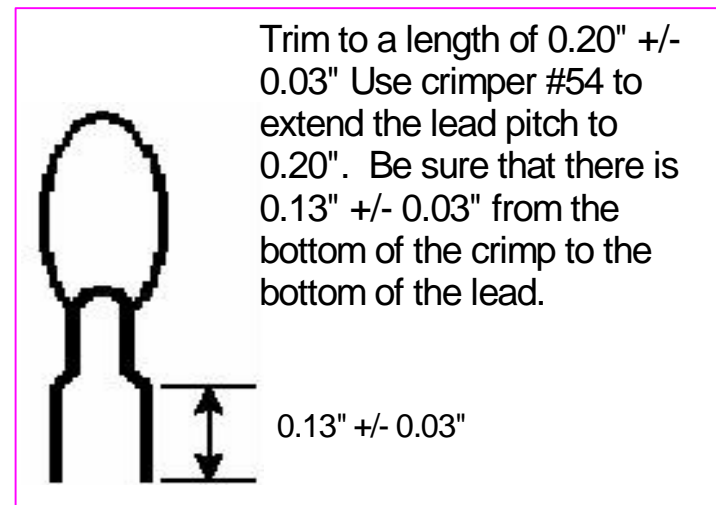
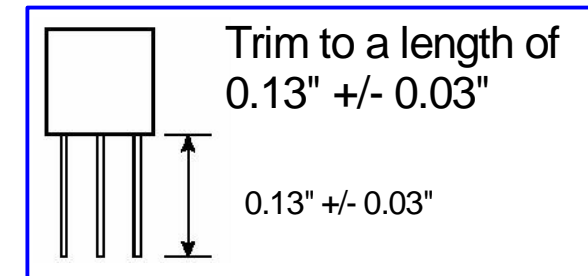
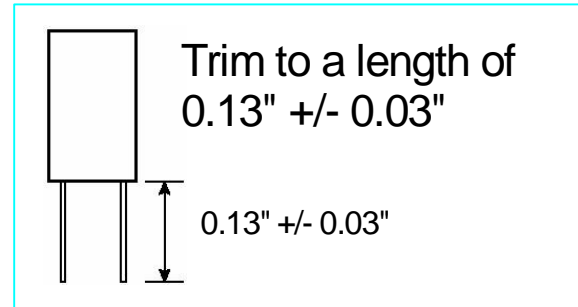
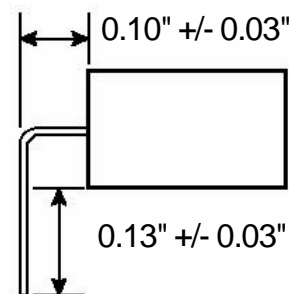
Process Point 9 PRPC:Component Prep
Prints from Online Documentation are only valid for 5 days from this date: <input type="text"/>

9 PRPC:Component Prep				
Prep per Color Coding				
Key	Box #	Part Number	Description	Qty
	PRPC ASYS	001-625-0025-R	XSR TH TIP29A TO220	2
	PRPC SLDE	001-639-0235-R	CAP TH TA 1UF 50V	15
	PRPC SLDE	001-639-0220-R	CAP TH CER 22PF 100V 10%	10
	PRPC SLDE	001-639-0178-R	CAP TH CER 100PF 100V	5
	PRPC SLDE	001-639-0213-R	CAP TH CER 10PF 50V	7
	PRPC SLDE	001-652-0023-R	CAP TH EL 2.2UF 35V	5
	PRPC ASYS	001-667-0007-R	XTL TH 32.768 KHZ	1
	PRPC SLDE	001-627-0025-R	VR TH 78L62 6.2V TO92	2

All lead lengths are measured from the bottom of the component, meniscus or standoff bend.



Form a right angle bend that starts 0.10" +/- 0.03" from the body of the component and has a lead length of 0.13" +/- 0.03", measuring from the bottom of the component.



Assembly Name Rollerskate Rocket Booster CIM		
Assembly (BOM) Number 001-0010-090	Product Revision C	Quality Standard ANSI/IPC-A-610 Latest Rev.
Customer Acme	Agency/Cust. Restrictions RoHS	



Assembly Classification Commercial		
E. I. C. Wyle E. Coyote		
Document Status Uncontrolled	Edition B	Last Modified 2/15/2010

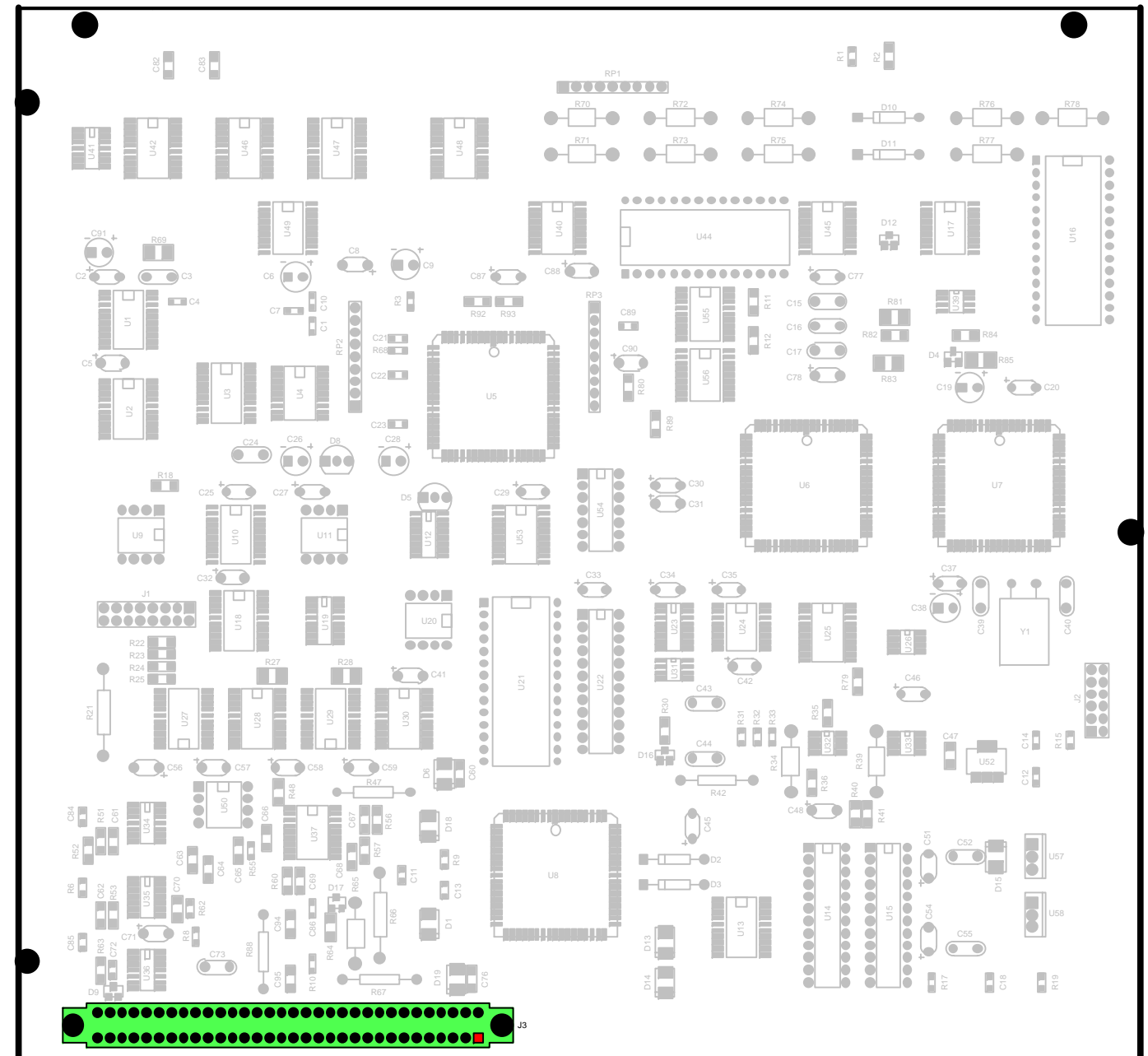
Process Point: 10 PSLD:Pre-Slideline Asy
Prints from Online Documentation are only valid for 5 days from this date: <input type="text"/>



10 PSLD:Pre-Slideline Asy				
Assemble per Color Coding				
Key	Part Number	Reference	Description	Qty
	001-668-0821-R	J3	CON TH HDR 2X32 VERT	1

Top

Be sure that the connector completely snaps into the PCB.



Call Q.A. for First Article

Assembly Name Rollerskate Rocket Booster CIM		
Assembly (BOM) Number 001-0010-090	Product Revision C	Quality Standard ANSI/IPC-A-610 Latest Rev.
Customer Acme	Agency/Cust. Restrictions RoHS	

Assembly Classification Commercial		
E. I. C. Wyle E. Coyote		
Document Status Uncontrolled	Edition B	Last Modified 2/15/2010

Process Point: 11 PRP:Masking
Prints from Online Documentation are only valid for 5 days from this date: <input type="text"/>

Please Note: This view is from the BOTTOM of the PCB. Non-Mounting holes that are not to be masked are not shown.

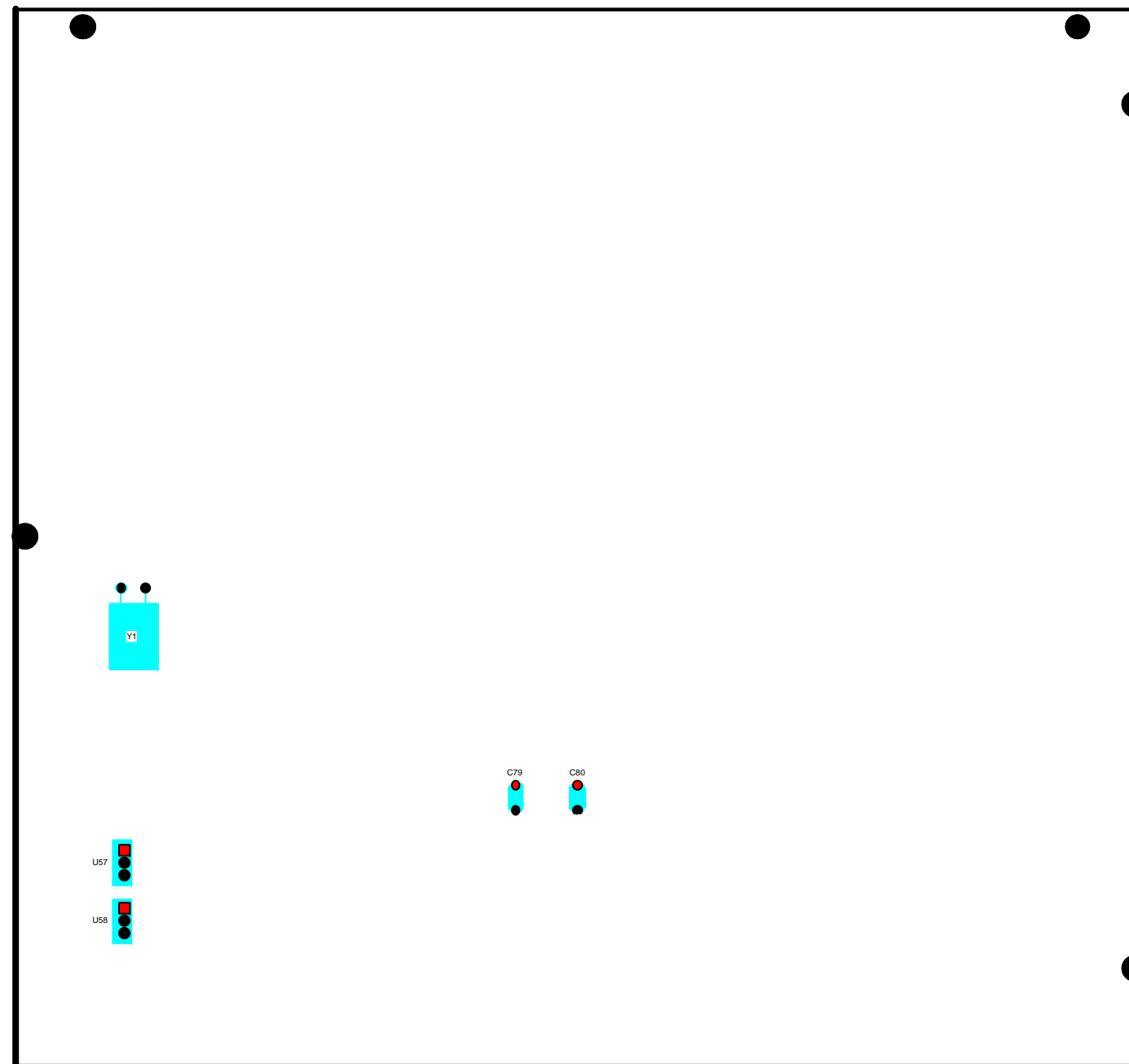
11 PRP:Masking				
Inspection Print				
Key	Part Number	Reference	Description	Qty
Inspect per Color Coding.				

Mask all of the holes of the components that are highlighted.

If there is a solder wave fixture available, use that instead of masking the board.

This is the color of washable liquid mask

This is the color of the Kapton tape.



Assembly Name Rollerskate Rocket Booster CIM		
Assembly (BOM) Number 001-0010-090	Product Revision C	Quality Standard ANSI/IPC-A-610 Latest Rev.
Customer Acme	Agency/Cust. Restrictions RoHS	

Assembly Classification Commercial		
E. I. C. Wyle E. Coyote		
Document Status Uncontrolled	Edition B	Last Modified 2/15/2010

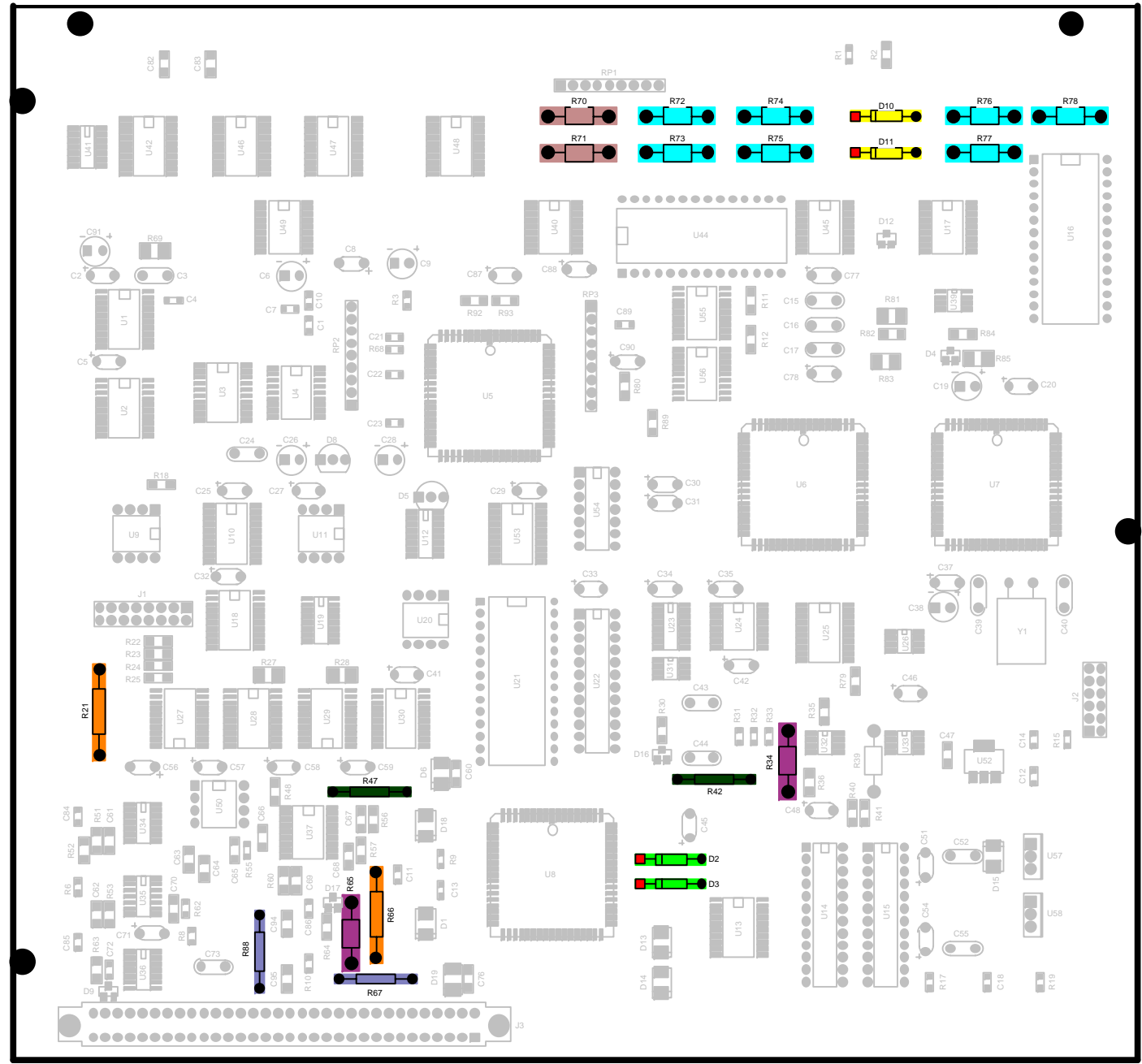
Process Point 12 SLDE:Slideline
Prints from Online Documentation are only valid for 5 days from this date: <input type="text"/>



12 SLDE:Slideline

Stuff per Color Coding

Key	Part Number	Reference	Description	Qty
	001-611-0013-R	D2-D3	DIO TH 1N4007 AXIAL	2
	001-619-0156-R	R72-R78	RES TH 15M OHM 5% 1/4W	7
	001-619-0160-R	R70-R71	RES TH 16 OHM 5% 1/4W	2
	001-611-0017-R	D10-D11	DIO TH 1N4933 AXIAL	2
	001-619-0222-R	R34, R65	RES TH 2.2K OHM 5% 1/4W	2
	001-619-0121-R	R67, R88	RES TH 120 OHM 5% 1/4W	2
	001-619-0103-R	R42, R47	RES TH 10K OHM 5% 1/4W	2
	001-619-5103-R	R21, R66	RES TH 510K 5% 1/4W	2



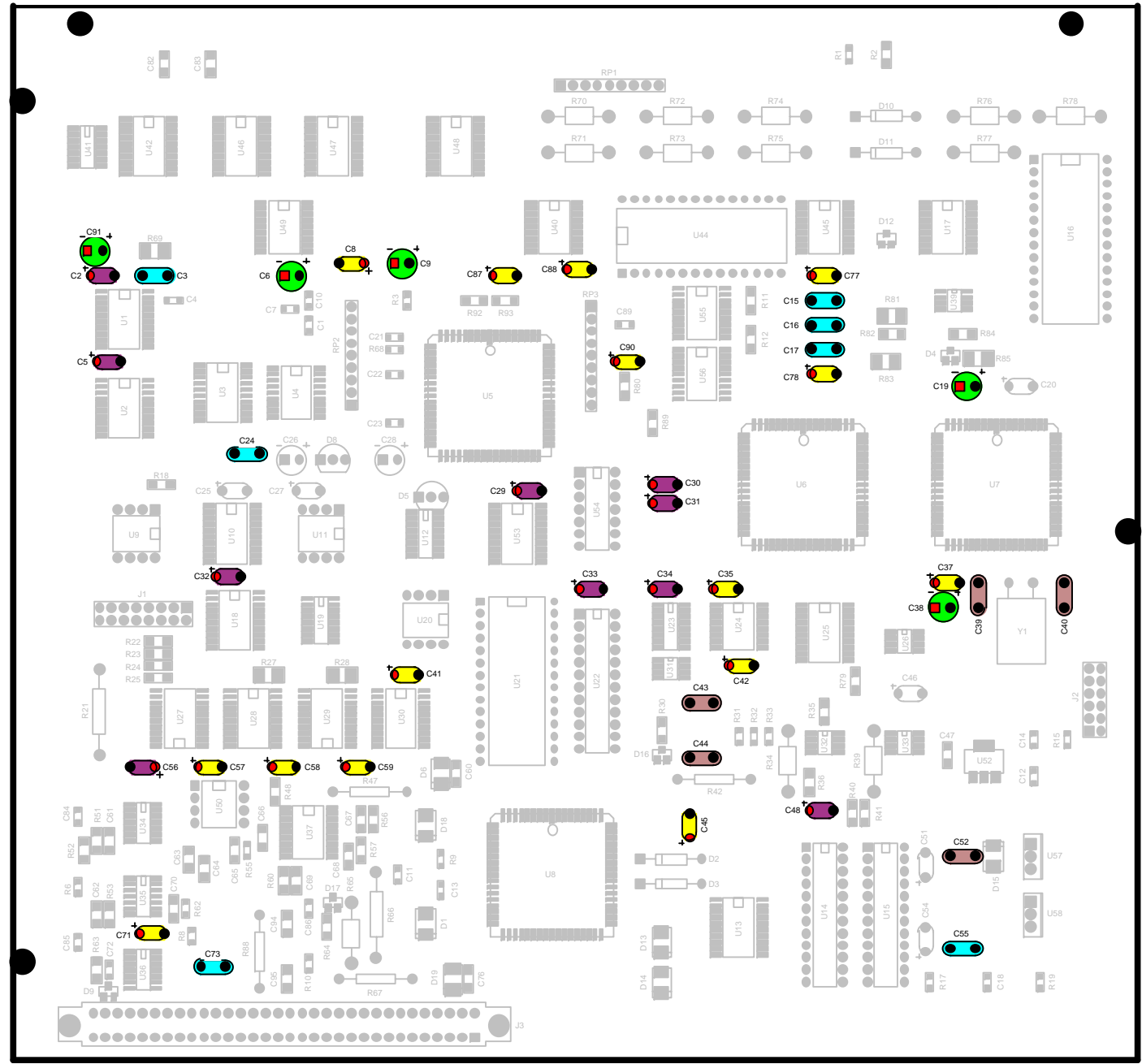
Assembly Name Rollerskate Rocket Booster CIM		
Assembly (BOM) Number 001-0010-090	Product Revision C	Quality Standard ANSI/IPC-A-610 Latest Rev.
Customer Acme	Agency/Cust. Restrictions RoHS	

Assembly Classification Commercial		
E. I. C. Wyle E. Coyote		
Document Status Uncontrolled	Edition B	Last Modified 2/15/2010

Process Point 12 SLDE:Slideline
Prints from Online Documentation are only valid for 5 days from this date: <input type="text"/>



12 SLDE:Slideline				
Stuff per Color Coding				
Key	Part Number	Reference	Description	Qty
	001-652-0023-R	C6, C9, C19, C38, C91	CAP TH EL 2.2UF 35V	5
	001-639-0213-R	C3, C15-C17, C24, C55, C73	CAP TH CER 10PF 50V	7
	001-639-0178-R	C39-C40, C43-C44, C52	CAP TH CER 100PF 100V	5
	001-639-0235-R	C8, C35, C37, C41-C42, C45, C57-C59, C71, C77-C78, C87-C88, C90	CAP TH TA 1UF 50V	15
	001-639-0220-R	C2, C5, C29-C34, C48, C56	CAP TH CER 22PF 100V 10%	10



Assembly Name Rollerskate Rocket Booster CIM		
Assembly (BOM) Number 001-0010-090	Product Revision C	Quality Standard ANSI/IPC-A-610 Latest Rev.
Customer Acme	Agency/Cust. Restrictions RoHS	

Assembly Classification Commercial		
E. I. C. Wyle E. Coyote		
Document Status Uncontrolled	Edition B	Last Modified 2/15/2010

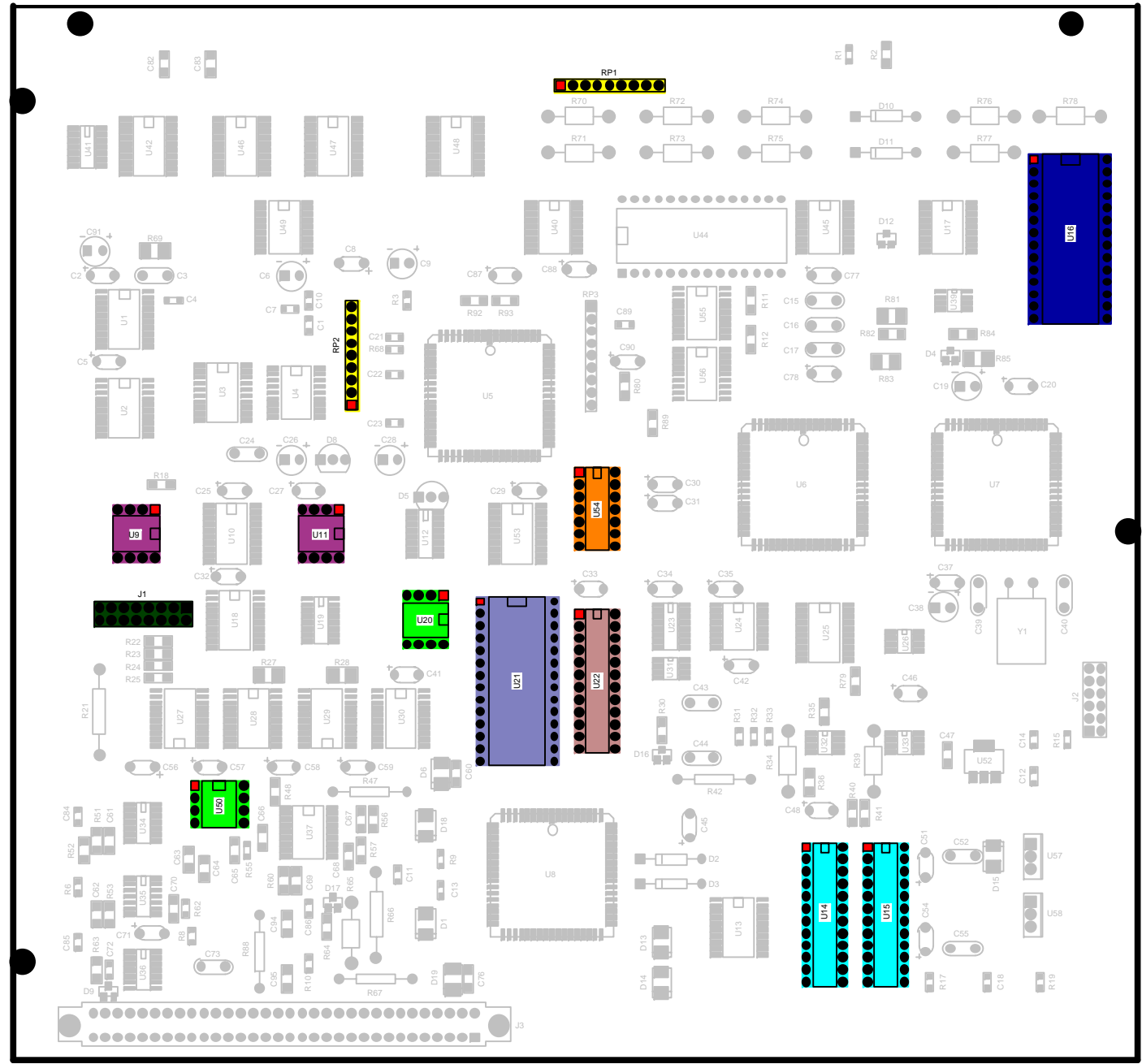
Process Point: 12 SLDE:Slideline
Prints from Online Documentation are only valid for 5 days from this date: <input type="text"/>



12 SLDE:Slideline

Stuff per Color Coding

Key	Part Number	Reference	Description	Qty
	001-630-0003-R	U20, U50	IC TH MAX1241 DIP8	2
	001-630-0252-R	U14-U15	IC TH 74HC390 DIP12	2
	001-630-0255-R	U22	IC TH 74HC161 DIP12	1
	001-630-0227-R	RP1-RP2	IC TH TDA1517U SIP9	2
	001-630-0027-R	U9, U11	IC TH MC33091A DIP8	2
	001-630-0109-R	U21	IC TH 6264 DIP28	1
	001-668-0773-R	J1	CON TH HDR 2X8 VERT	1
	001-630-0023-R	U54	IC TH 74HCT08 DIP14	1
	001-630-0089-R	U16	IC TH 27C256 DIP28	1



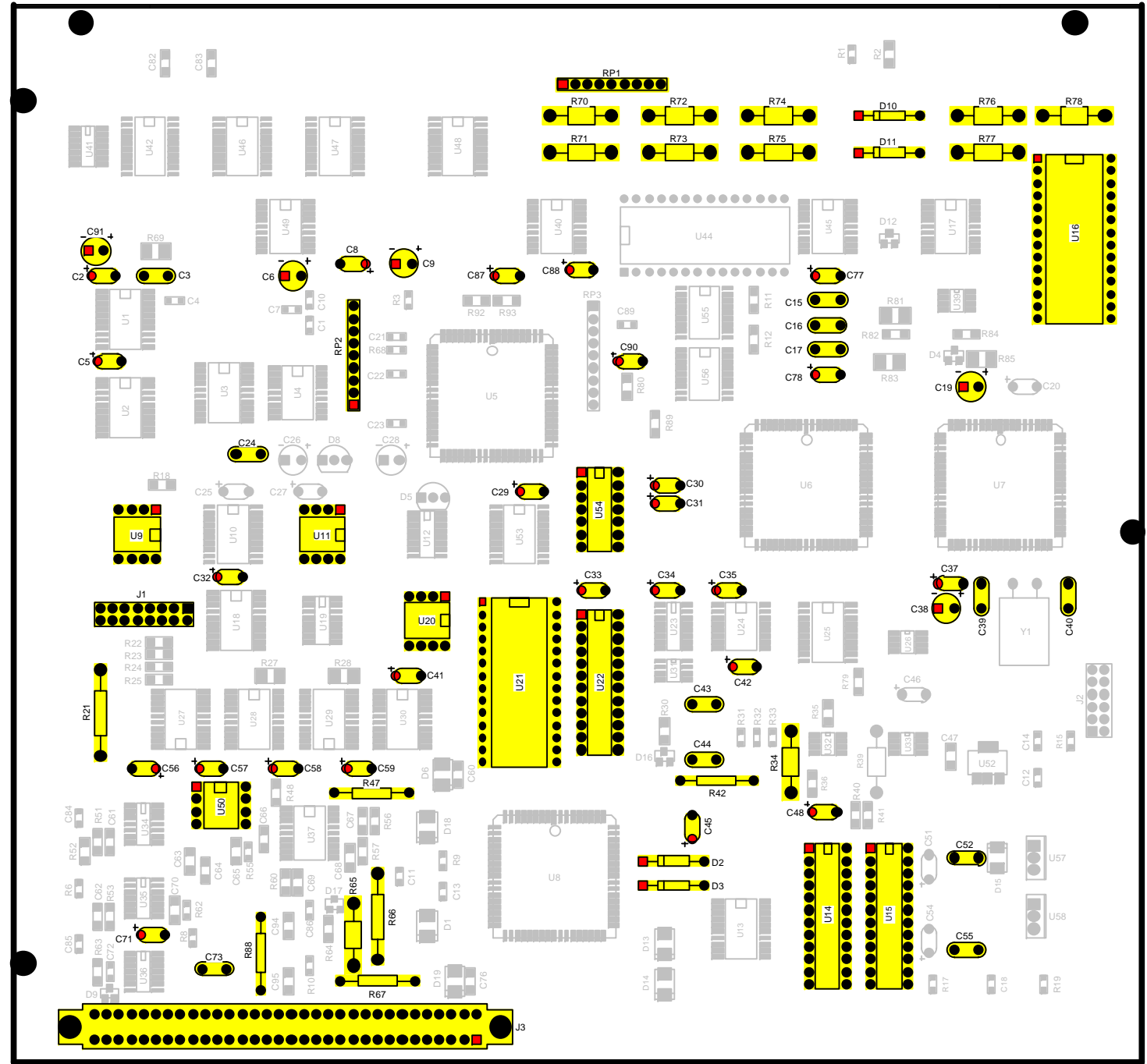
Assembly Name Rollerskate Rocket Booster CIM		
Assembly (BOM) Number 001-0010-090	Product Revision C	Quality Standard ANSI/IPC-A-610 Latest Rev.
Customer Acme	Agency/Cust. Restrictions RoHS	

Assembly Classification Commercial		
E. I. C. Wyle E. Coyote		
Document Status Uncontrolled	Edition B	Last Modified 2/15/2010

Process Point 13 Populated Slideline
Prints from Online Documentation are only valid for 5 days from this date: <input type="text"/>



All of the components that are highlighted in yellow should be installed before wave.



Call Q.A. for First Article

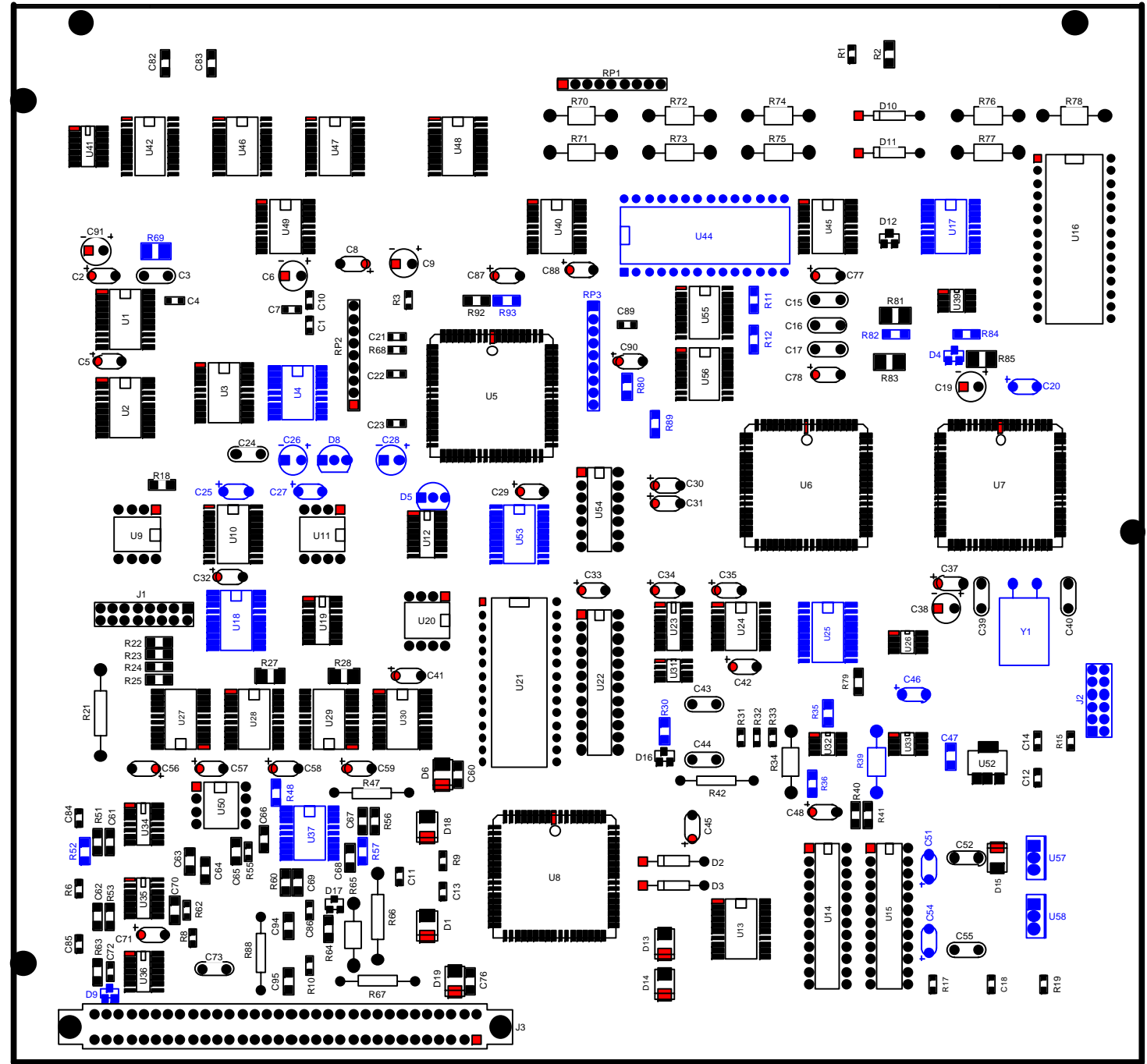
Assembly Name Rollerskate Rocket Booster CIM		
Assembly (BOM) Number 001-0010-090	Product Revision C	Quality Standard ANSI/IPC-A-610 Latest Rev.
Customer Acme	Agency/Cust. Restrictions RoHS	

Assembly Classification Commercial		
E. I. C. Wyle E. Coyote		
Document Status Uncontrolled	Edition B	Last Modified 2/15/2010

Process Point 14 Not Populated Slideline
Prints from Online Documentation are only valid for 5 days from this date: <input type="text"/>



Components shown in blue below are not populated on this assembly at this time.
 Note: SMT components that are not installed are shown in blue as well.
 Note: Test Points may be highlighted in blue, but they are not components and are not loaded.



Assembly Name Rollerskate Rocket Booster CIM		
Assembly (BOM) Number 001-0010-090	Product Revision C	Quality Standard ANSI/IPC-A-610 Latest Rev.
Customer Acme	Agency/Cust. Restrictions RoHS	

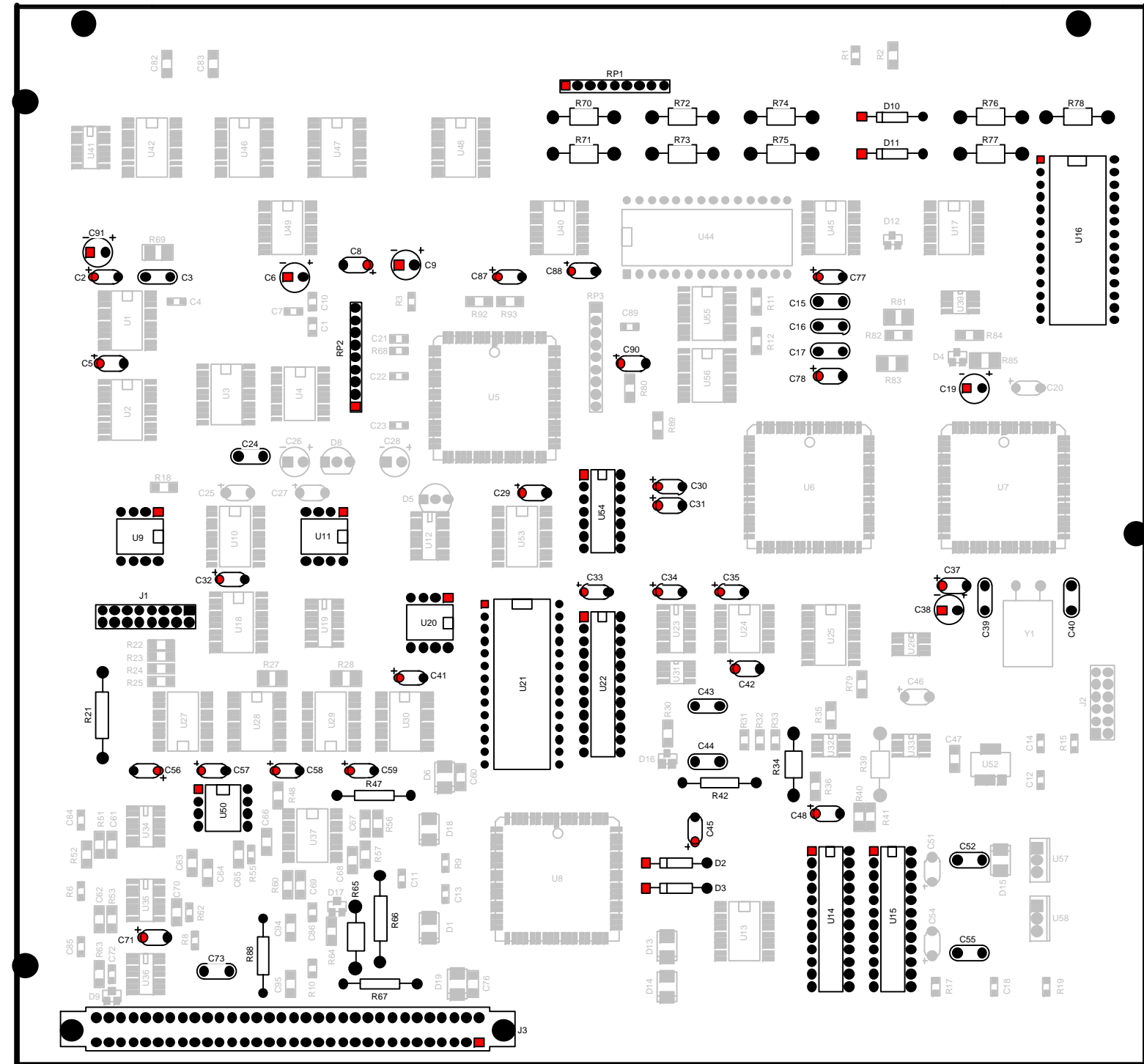
Assembly Classification Commercial		
E. I. C. Wyle E. Coyote		
Document Status Uncontrolled	Edition B	Last Modified 2/15/2010

Process Point 15 WAVE:Wave
Prints from Online Documentation are only valid for 5 days from this date: <input type="text"/>



Wave Program Name: **001-0010-090**


Conveyer flows in this direction.



Call Q.A. for First Article



PROPRIETARY INFORMATION: Property of Ascentron, Inc.
Unlawful to copy, reproduce or disclose by any means without the
express written consent of Ascentron.

Assembly Name Rollerskate Rocket Booster CIM		
Assembly (BOM) Number 001-0010-090	Product Revision C	Quality Standard ANSI/IPC-A-610 Latest Rev.
Customer Acme	Agency/Cust. Restrictions RoHS 	

Assembly Classification Commercial		
E. I. C. Wyle E. Coyote		
Document Status Uncontrolled	Edition B	Last Modified 2/15/2010

Process Point: 16 Wash:DI Cleaning
Prints from Online Documentation are only valid for 5 days from this date: <input type="text"/>



Wash the assembly using the most appropriate inline cleaner.

Assembly Name Rollerskate Rocket Booster CIM		
Assembly (BOM) Number 001-0010-090	Product Revision C	Quality Standard ANSI/IPC-A-610 Latest Rev.
Customer Acme	Agency/Cust. Restrictions RoHS	



Assembly Classification Commercial		
E. I. C. Wyle E. Coyote		
Document Status Uncontrolled	Edition B	Last Modified 2/15/2010

Process Point 17 ASYS:Solder Assembly
Prints from Online Documentation are only valid for 5 days from this date: <input type="text"/>

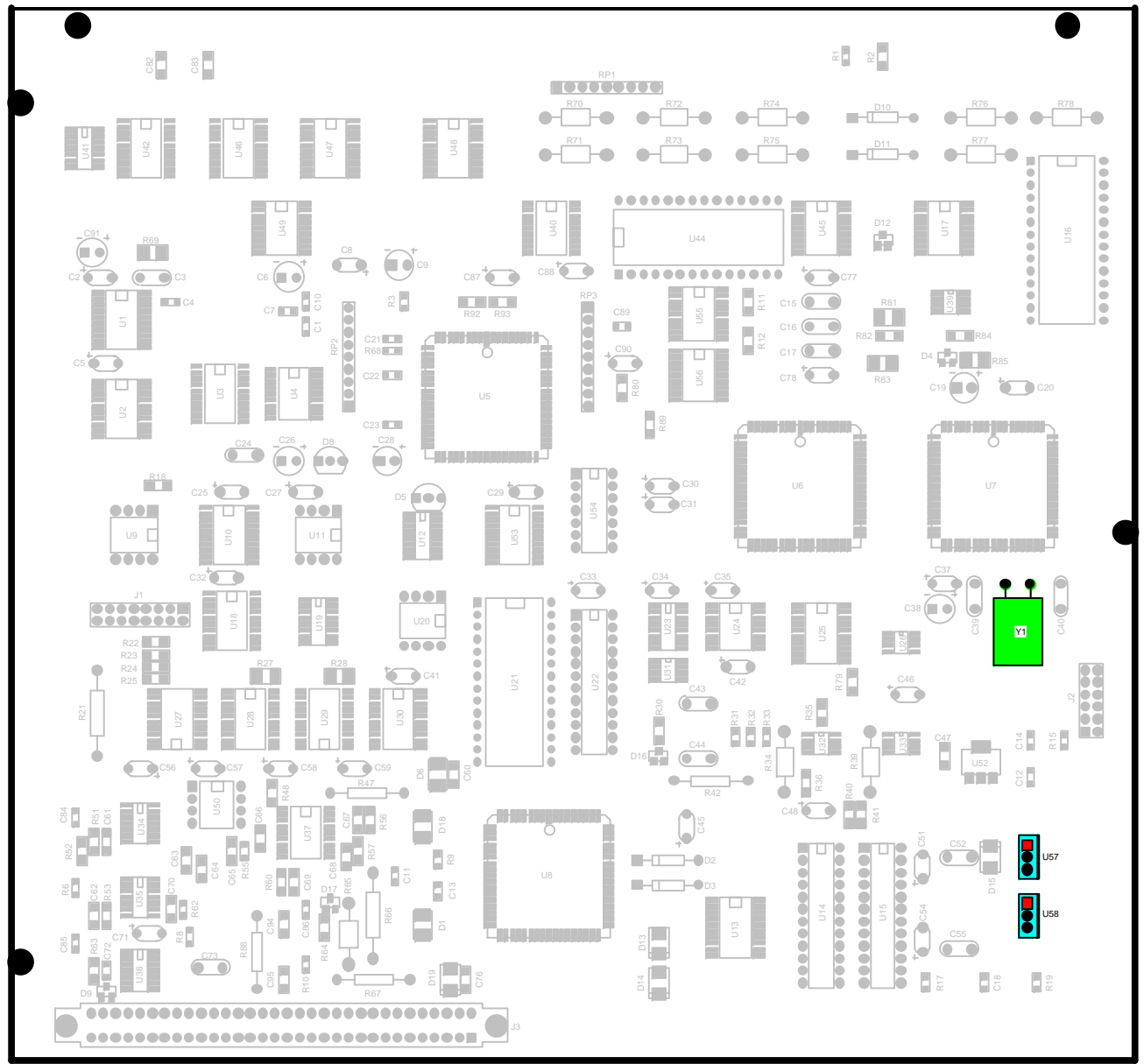


17 ASYS:Solder Assembly				
Assemble per Color Coding				
Key	Part Number	Reference	Description	Qty
	001-667-0007-R	Y1	XTL TH 32.768 KHZ	1
	001-625-0025-R	U57-U58	XSR TH TIP29A TO220	2
	001-639-0153-R	C79-C80	CAP TH CER .1UF 100V 10%	2

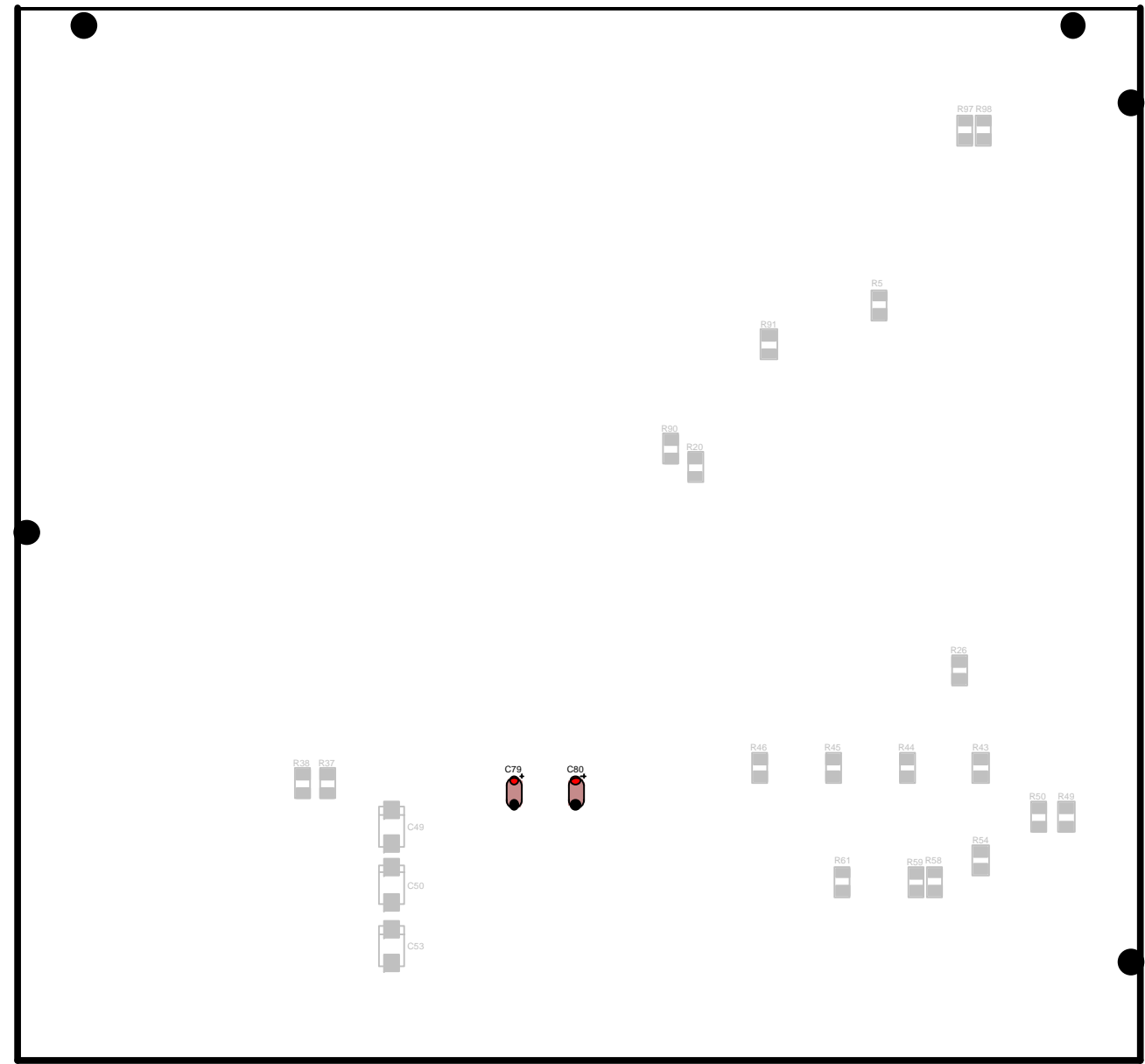
Be sure to use NoClean flux solder

Use SN100C lead-free solder

Top



Bottom



Call Q.A. for First Article

Assembly Name Rollerskate Rocket Booster CIM		
Assembly (BOM) Number 001-0010-090	Product Revision C	Quality Standard ANSI/IPC-A-610 Latest Rev.
Customer Acme	Agency/Cust. Restrictions RoHS	

Assembly Classification Commercial		
E. I. C. Wyle E. Coyote		
Document Status Uncontrolled	Edition B	Last Modified 2/15/2010

Process Point 18 TST:Test
Prints from Online Documentation are only valid for 5 days from this date: <input type="text"/>



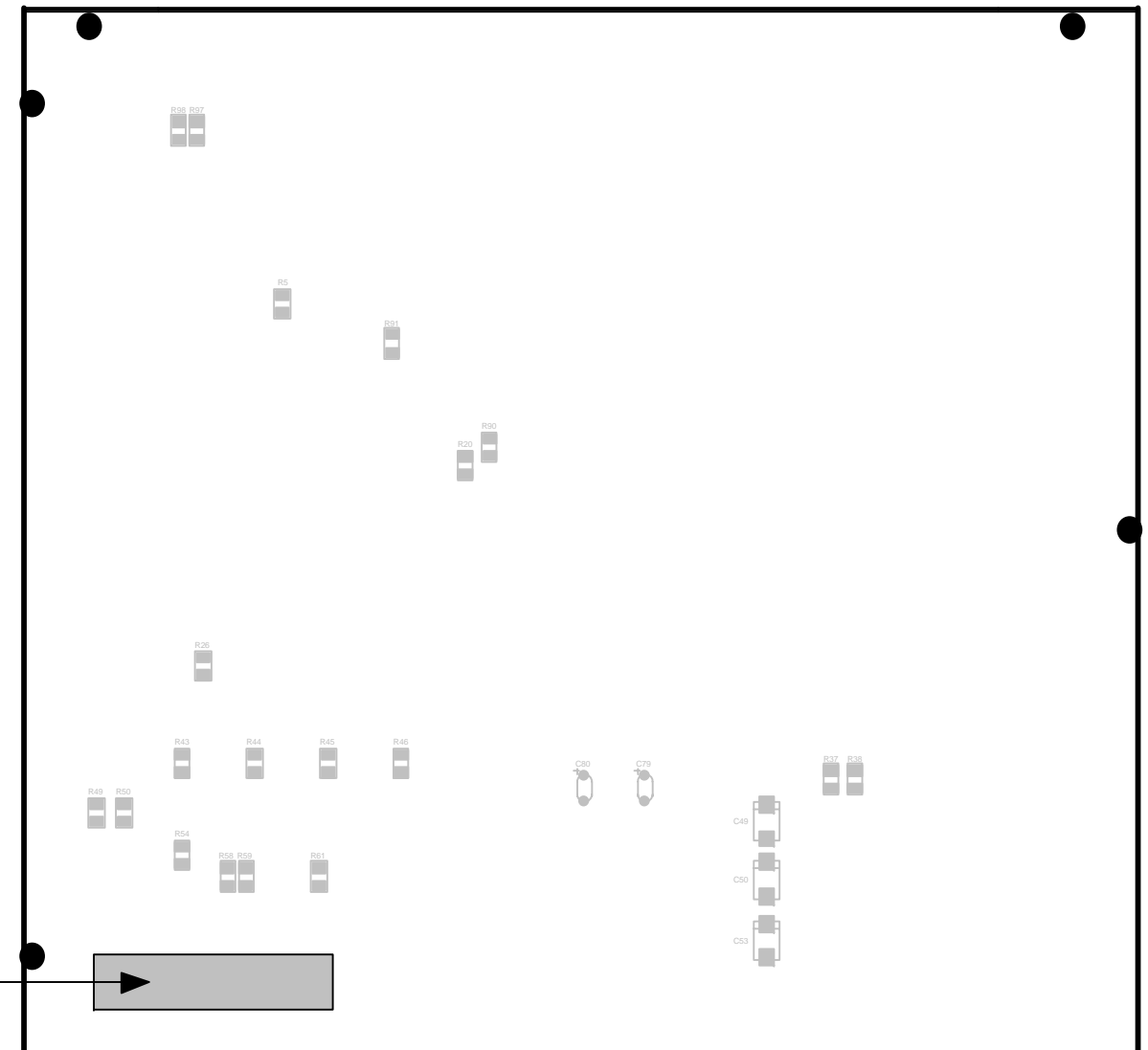
18 TST:Test				
Assemble per Color Coding				
Key	Part Number	Reference	Description	Qty
	735-0186	---	LBL 1.00 X .375 THERMAL	1

Test the assembly per customer supplied Test Procedure:
 "RRB-CIM Accelerated Linear Motion Measurement with Precipice ver. 1.0"

The format for the serial number label is:

RRB-CIM REV. C
 S/N: YYWW/xxxx

The top number is the product and revision.
 Serial number is formatted: "YY" = year, "WW" = week,
 "xxxx" = incrementing number




Place the serial number label here

Send to Final Q.A.



PROPRIETARY INFORMATION: Property of Ascentron, Inc.
Unlawful to copy, reproduce or disclose by any means without the
express written consent of Ascentron.

Assembly Name Rollerskate Rocket Booster CIM		
Assembly (BOM) Number 001-0010-090	Product Revision C	Quality Standard ANSI/IPC-A-610 Latest Rev.
Customer Acme	Agency/Cust. Restrictions RoHS 	

Assembly Classification Commercial		
E. I. C. Wyle E. Coyote		
Document Status Uncontrolled	Edition B	Last Modified 2/15/2010

Process Point: 19 PKG/SHIP:Package Product & Ship
Prints from Online Documentation are only valid for 5 days from this date: <input type="text"/>



Pack the assemblies in an appropriately sized anti-static bag. (One assembly to a bag.)

Wrap the bagged assemblies in pink foam.

Pack in an appropriately sized box lined with bubble pack.

Fill any voids that would allow movement of the assemblies with anti-static foam material.

Assembly Name Rollerskate Rocket Booster CIM		
Assembly (BOM) Number 001-0010-090	Product Revision C	Quality Standard ANSI/IPC-A-610 Latest Rev.
Customer Acme	Agency/Cust. Restrictions RoHS	

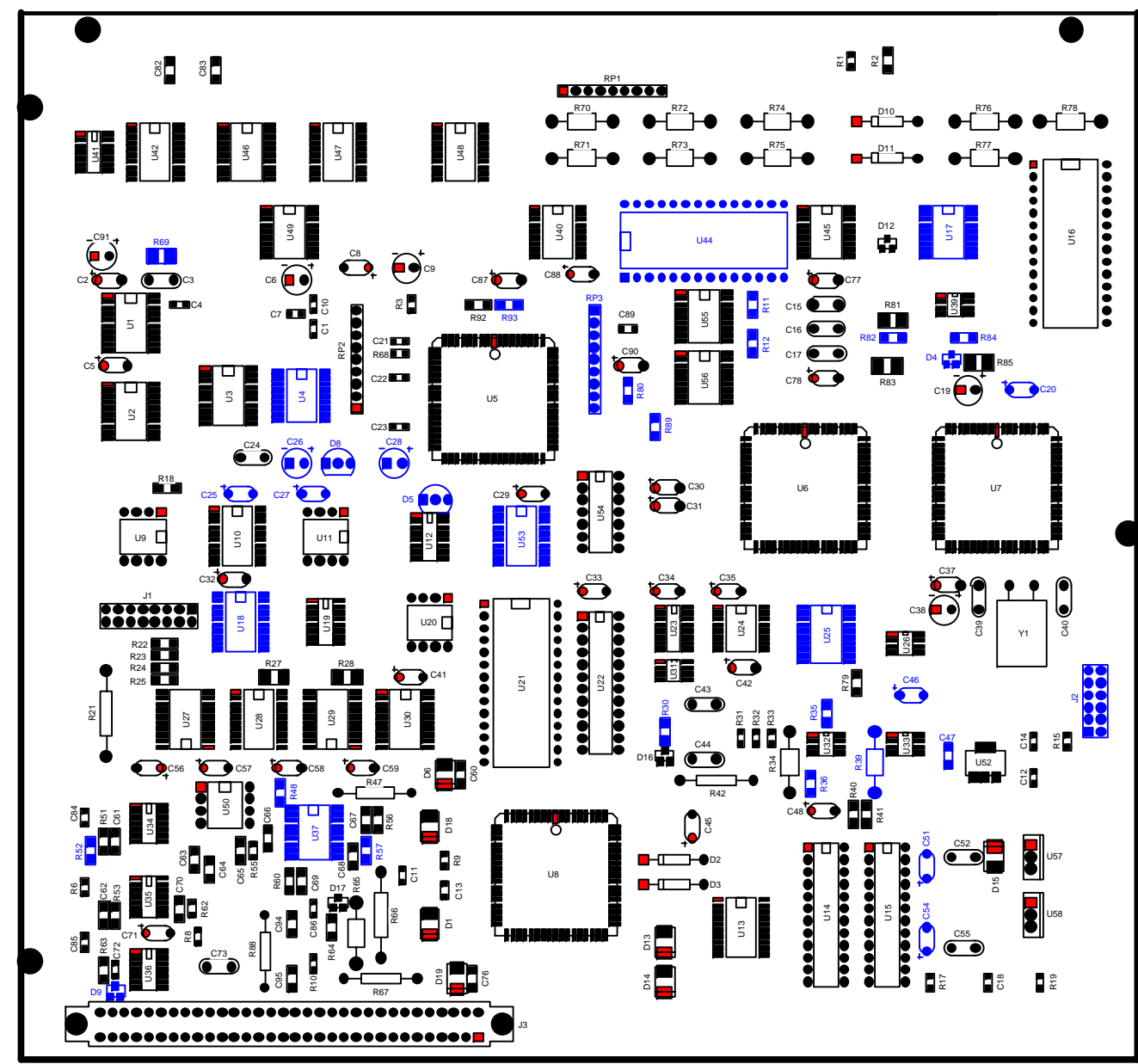
Assembly Classification Commercial		
E. I. C. Wyle E. Coyote		
Document Status Uncontrolled	Edition B	Last Modified 2/15/2010

Process Point: 20 Not Populated Top & Bottom
Prints from Online Documentation are only valid for 5 days from this date: <input type="text"/>



Components shown in blue below are not populated on this assembly.
 Note: Test Points which are just pads may be highlighted in blue, but they are not components and are not loaded.

Top



Bottom

